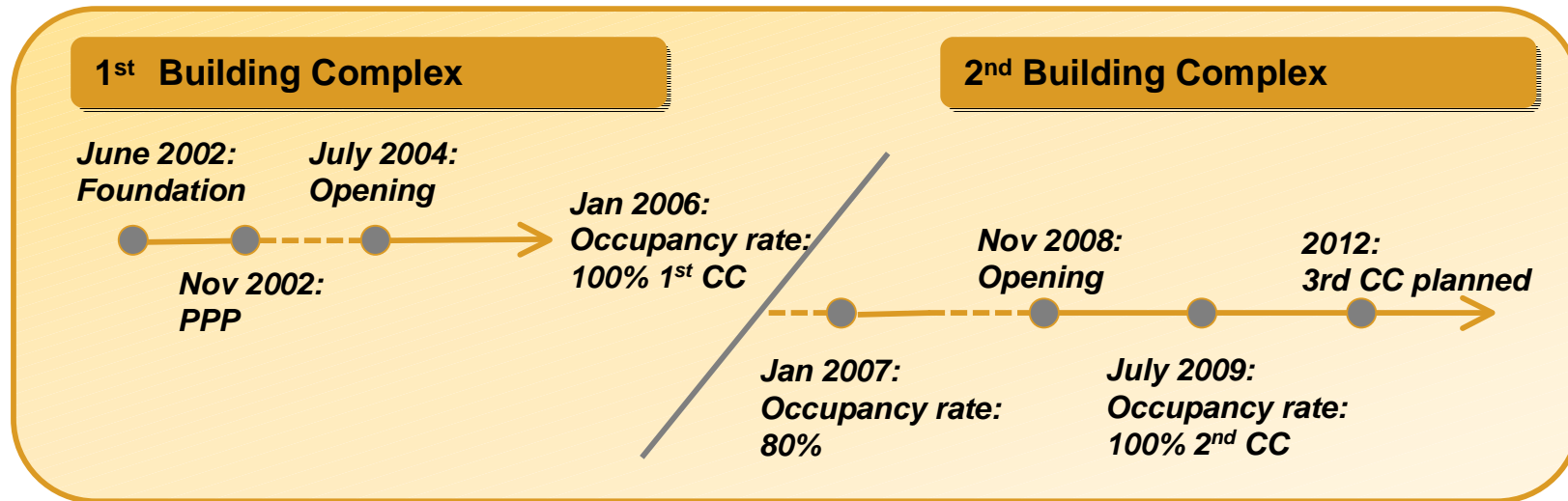




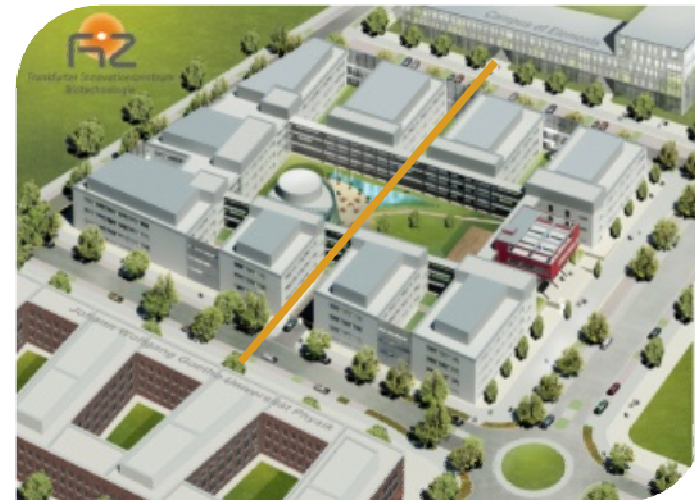
Applying Machine Learning and Human Editors to Patent Data

Dr. Christian Garbe

FIZ Frankfurt Innovation Center

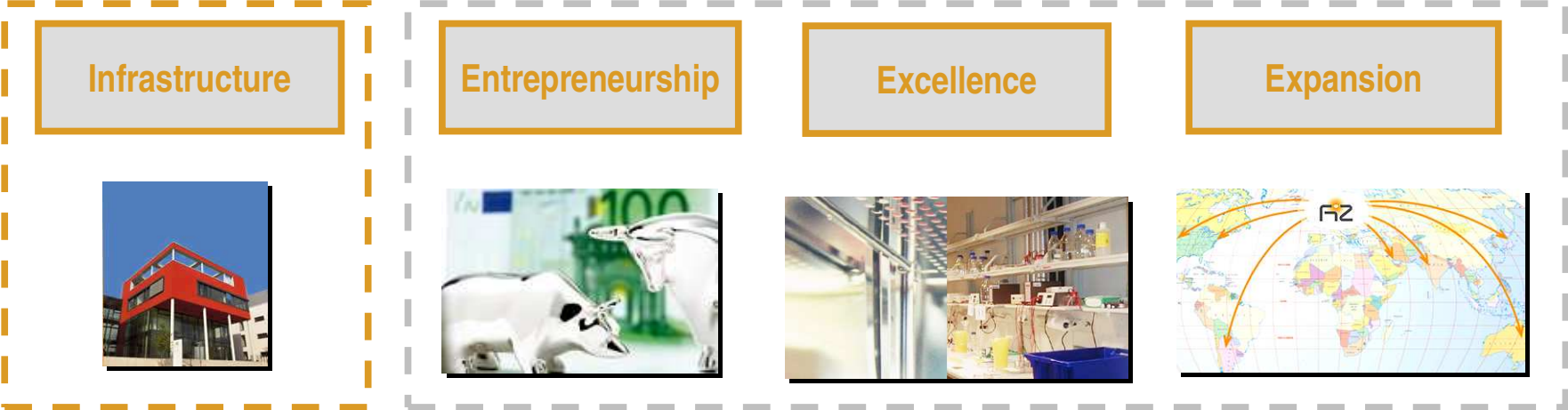


Infrastructure	Investment in Mio EUR
1 st CC as combined incubator : 6.500 m ² lab and office space	ca. 25,8
2 nd CC 8.500 m ² commercial lab and office space	ca. 24,2
Conference center	ca. 2
Private investments by tenants	ca. 25
Science City Frankfurt Riedberg	



FIZ Frankfurt Innovation Center

FIZ is „the **central contact point**, closing the gap between **basic research** and **commercialization** and thus FIZ supports the **creation of added value by turning innovations into marketable products**“.



FIZ Frankfurt Innovation Center Infrastructure

Tenants of FIZ benefit from the **geographical location** and the **modern equipment** of FIZ.

Geographical Location

- 🕒 **Proximity** to the international **Airport** Frankfurt
- 🕒 **Science City Frankfurt-Riedberg**
- 🕒 **Neighborhood** to all **scientific faculties of the Johann Wolfgang Goethe-University** & other **excellent research institutes**
- 🕒 Closeness to **international pharmaceutical companies**

Laboratory – and Office Space

- 🕒 **Individually designed and modern office- and laboratory space** (~ 14.000 m² / ~ 150,700 sq ft)
- 🕒 **S1-S3 laboratories, cleanrooms, customized interior design**
- 🕒 **FIZ ConferenceLab**



FIZ Frankfurt Innovation Center Entrepreneurship



The **economic focus** and the **network** of FIZ reflect **entrepreneurship**.

Economic Focus

- Focus on marketability and commercialization of innovation
- Scientific and Business Advisory Board

Network

- Heterogeneous structure of tenants supports synergies and co-operation



FIZ Frankfurt Innovation Center Excellence

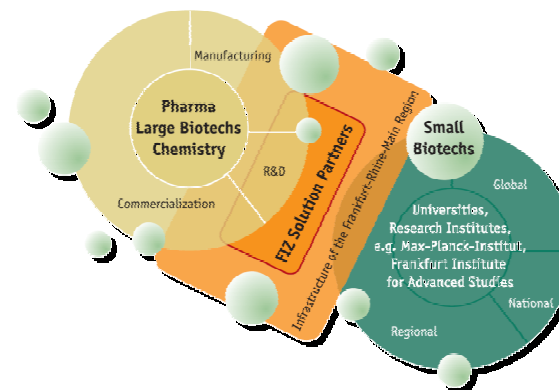
Focused research, a high degree of networking and a structured interface enable an efficient technology transfer.

Research

- 🔍 **Indication areas at FIZ**
 - 🔍 Diseases of the Central Nervous System
 - 🔍 Inflammatory Diseases
 - 🔍 Proteomics
- 🔍 **Network enables access to the equipment of local public institutes**

Interface

- 🔍 FIZ as **interface** between **basic research** and the **pharmaceutical industry**
- 🔍 **Contact with top decision makers** from **politics, business and research**

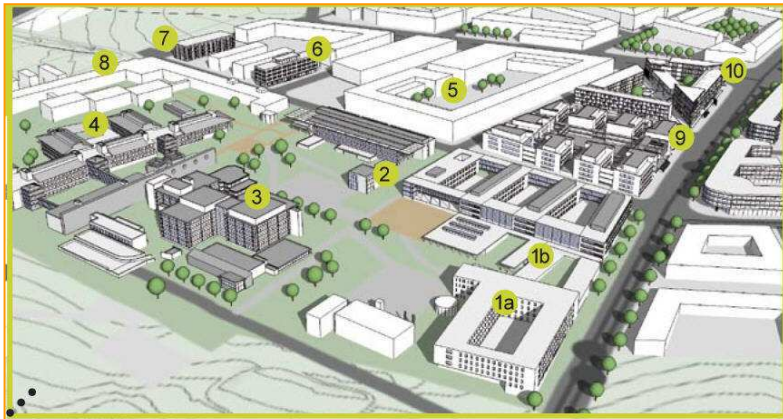


FIZ Frankfurt Innovation Center Expansion

The **local** and **international network** is a key condition for **growth and expansion**.

Growth

- ✓ Science City Frankfurt-Riedberg:
 - ✓ 266 hectares (28 mio. sq ft)
 - ✓ N° of residents: 15.000
 - ✓ N° of working places: 3.000
 - ✓ N° of students: 8.000

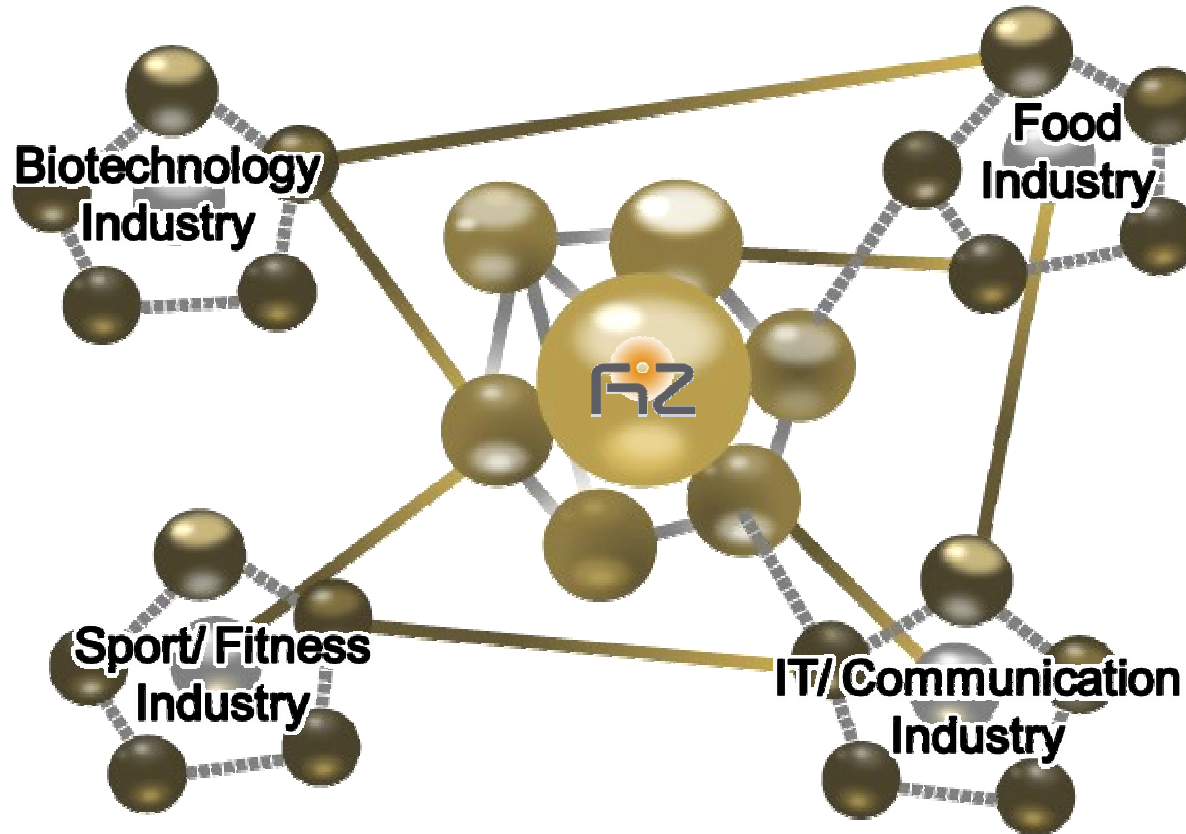


Internationality

- ✓ Acquisition of **national and international small and medium sized companies**
- ✓ Continuous **expansion of the network**



FIZ Innovation Landscape for Initializing Cross Innovation



FIZ exploits the opportunities of the innovation landscape as a key driver for **cross innovation** in order to respond to the latest trend of prevention and personalization.

How do we do it?

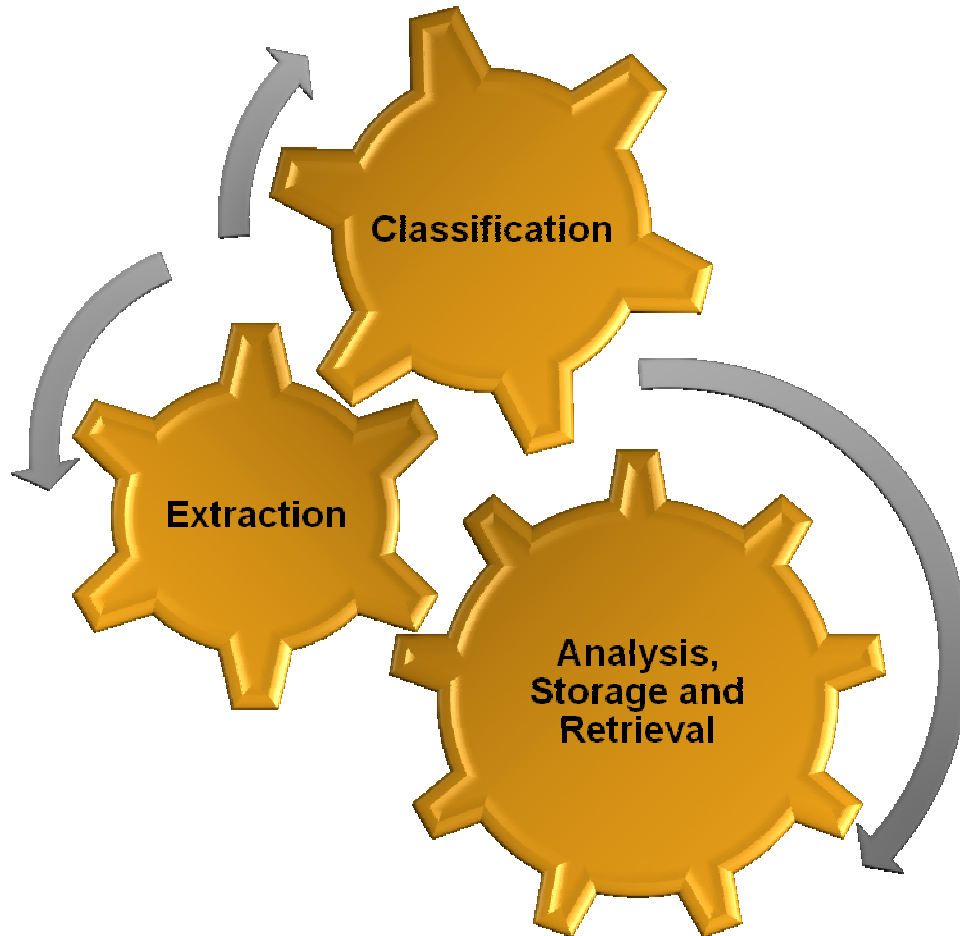
- We have subject experts who assist our tenant companies in their research and in finding collaborations to commercialize their products.
- They are required to analyze a large number of patents in a very short space of time and of course with very high level of accuracy.
- Earlier the companies were using a fully manual approach which gave them a high level of accuracy, but was very time consuming.

Evolvus' intelligent Information mining tool – Infomine©



- Infomine is a software platform to manage large and complex data mining assignments.
- It uses a hybrid approach wherein machine learning based text-extraction software is coupled with assisted expert annotations by human editors.
- Platform defines the structure and the mechanism in which the data is channelized through appropriate software tools and processes to extract relevant information.
- In our experience, Infomine is giving 100% accuracy with best possible efficiency.

Software Platform Process



Classification:

Automated process
Based on keywords
Multiple source formats

Extraction:

Segmentation of data
Semi-automated extraction of relevant content

Analysis, Storage and Retrieval:

Analysis by expert human editors
Near 100% accuracy
Normalized data storage
Easily query and extract information

Patent Data Extraction and Annotation

■ Classification

- Web Crawler technology to download abstracts from patent websites
- Classification of patent documents based on keywords
 - Search based on dictionary of keywords e.g. Markush, Antagonist, Therapeutic, Sidechains, Assay etc
 - This Dictionary is customizable
- Organization of patent documents based on multiple parameters
 - E.g. based on patent owner, year etc...
- Conversion of documents to standardized format

■ Extraction

- Break documents into segments
- Use of proprietary, heuristic based learning algorithm
- Software assisted by team of expert human editors
 - Automation cannot be 100% accurate
 - Editors analyze segments and perform necessary corrections

Patent Data Extraction and Annotation

■ Analysis

- Push each segment to team of expert human editors
- Human editors re-analyze the segment and extract relevant information
- Different teams with different domain expertise work together
 - Biology, Chemistry, Pharmacology etc...
- Seamless and simultaneous contribution
 - Two teams can work on the same segment in parallel improving efficiency

■ Storage & Retrieval

- All information converted into normalized form for standardization
- Standardized mechanism to query and retrieve information
- Ability to create complex queries to retrieve only the data of interest

Sample Patent Document Abstract



US005494668A

United States Patent [19]
Patwardhan

[11] **Patent Number:** **5,494,668**
[45] **Date of Patent:** **Feb. 27, 1996**

[54] **METHOD OF TREATING
MUSCULOSKELETAL DISEASE AND A
NOVEL COMPOSITION THEREFOR**

4,906,471 7/1990 Liu 424/195.1
5,064,823 11/1991 Lee et al. 514/198
5,120,538 6/1992 Oie 424/195.1

[76] **Inventor:** **Bhushan Patwardhan**, 1471 Shukarwar
Peth, Bhaumaharaj Bol, Poona 411 002,
Ind.

Primary Examiner—John W. Rollins

[21] **Appl. No.:** **273,189**

[22] **Filed:** **Jul. 11, 1994**

[51] **Int. Cl.⁶** **A61K 35/78**

[52] **U.S. Cl.** **424/195.1; 514/825; 514/886;**
514/925

[58] **Field of Search** 424/195.1; 514/825,
514/886, 925

[57] **ABSTRACT**

A method of treating degenerative musculoskeletal diseases such as rheumatoid arthritis and osteoarthritis in an animal, typically a human, comprises administering to the animal, typically orally, in a convenient dosage form, a therapeutically effective amount of the benefited extracts of the plants ASHWAGANDHA (*Withania somnifera*), SALLAI GUGGUL (*Boswellia serrata*), TURMERIC (*Curcuma longa*), and GINGER (*Zingiber officinale*) in a predetermined proportion relative to each other with or without other biologically active inorganic ingredients, such as zinc sulphate. The benefited plant extracts are made in accordance with a novel process which is also disclosed.

[56] **References Cited**

U.S. PATENT DOCUMENTS

4,324,785 4/1982 Stevens 424/195.1

12 Claims, 3 Drawing Sheets

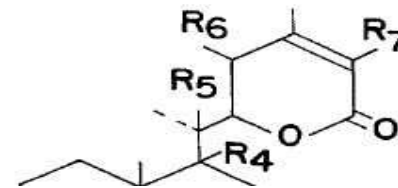
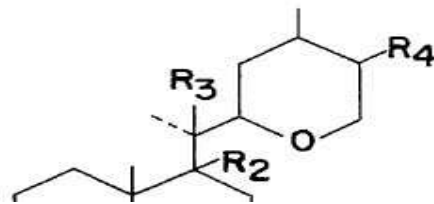
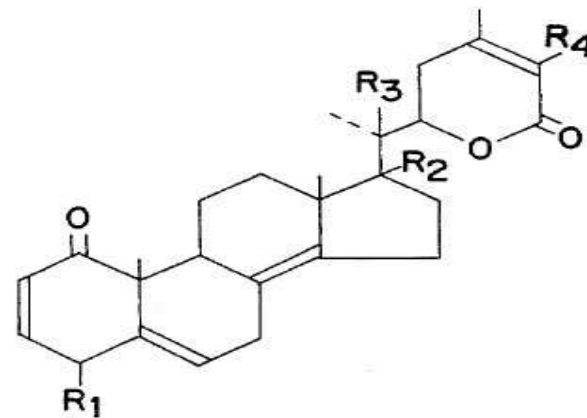
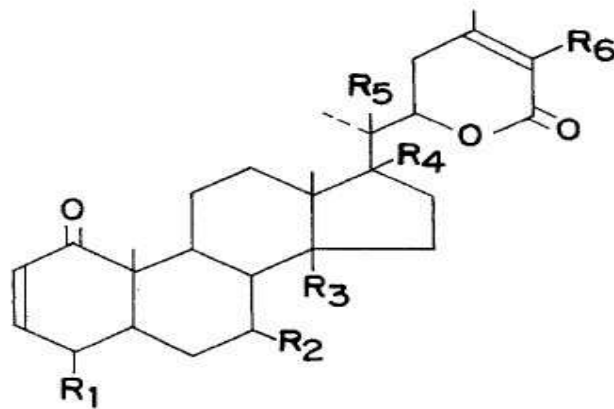
Sample Patent Document Abstract

U.S. Patent

Feb. 27, 1996

Sheet 1 of 3

5,494,668



Conclusion

- We found Infomine to serve our purpose in annotating very large unstructured patent data.
- FIZ plans to expand this in other scientific areas (Proteomics).
- Application of Infomine has improved our turn around time significantly.

Thank you for your attention!