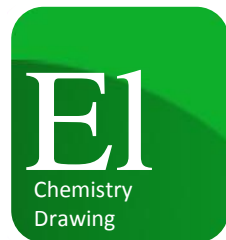


innovative

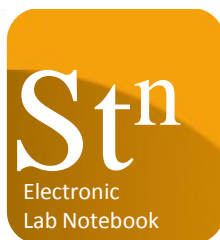


user-driven



accessible

out-of-the-box



enterprise suite

John Gatenby - Senior Account Manager

jg@dotmatics.com

Dotmatics Introduction

innovative

user-driven

accessible

out-of-the-box

enterprise suite

- Spin off from a major corporation
- A software solutions & services provider
- Private and profitable
- Solutions developed by scientists for scientists
- Agile development

- Rapidly growing global customer base
 - Pharma, Biotech, Non-Profit, Academia, Government, CROs, Chemicals, Oil & Gas, Engineering
 - >200 customers in more than 30 countries
- Global presence
 - Headquarters in the U.K.
 - U.S. (Boston, San Diego)
 - Asia Pacific
 - The Netherlands



...Scientists should have access to their data

Dotmatics delivers to users, a **web-based** out-of-the-box **platform** that allows scientists to capture, register, share, collaborate, query, visualize and analyze all the information and knowledge they generate.

The company's unique, state-of-the-art solutions enable scientists across the globe to **create, collaborate and communicate scientific information effectively.**

innovative

user-driven

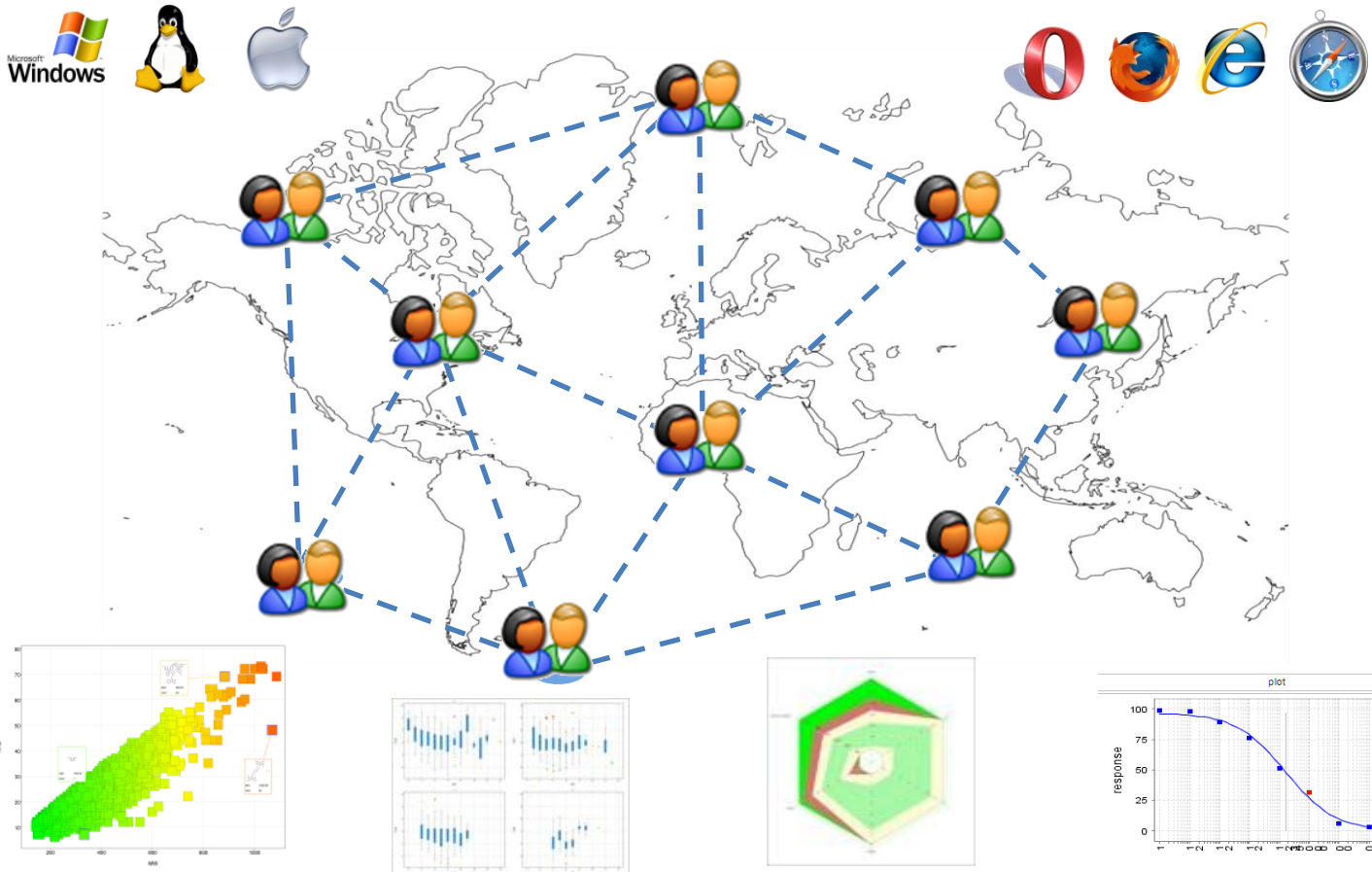
accessible

out-of-the-box

enterprise suite

Collaborative Informatics Solutions for All

Using Dotmatics solutions users of all disciplines can manage and share data across the globe.



innovative

user-driven

accessible

out-of-the-box

enterprise suite

Our users

These are a just a few examples of our users across Life Sciences:

1. Pharmaceutical Companies
2. Small to large Biotechs
3. CROs
4. Academia
5. Non-Profit Organizations
6. Government Research Labs

innovative

user-driven

accessible

out-of-the-box

enterprise suite

Fully integrated suite of tools

innovative
user-driven
accessible
out-of-the-box
enterprise suite

register → **gateway** → **studies** → **vortex** → **ELN** → **register**

The screenshots illustrate the following capabilities:

- DOTMATIC COMPOUND REGISTRY:** A central hub for managing chemical data, including compound info, batch & sample info, and QC data.
- ALZHEIMERS Gateway:** A platform for sharing and accessing chemical data, featuring a search interface and a list of compounds with their properties.
- register products:** A form for entering new chemical compounds, including fields for amount, project, salt, and stereochemistry.
- studies:** A data analysis tool showing a table of sample results with columns for sample ID, result, concentration, and signal, alongside a plot of % inhibition vs. concentration.
- vortex:** A 3D visualization tool for chemical data, showing a scatter plot of activity (Y-axis) vs. XLOGP (X-axis) and a 3D bar chart representing the data distribution.
- ELN (Electronic Lab Notebook):** A tool for recording and managing laboratory data, including chemical structures and reaction conditions.

Uniquely Positioned To

innovative

user-driven

accessible

out-of-the-box

enterprise suite

- Provide a **comprehensive** scientific informatics platform

OR

- **Fill technology gaps** left behind by other informatics providers or legacy systems

A single suite for all disciplines

innovative

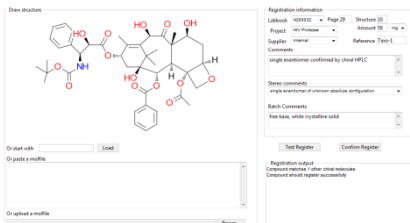
user-driven

accessible

out-of-the-box

enterprise suite

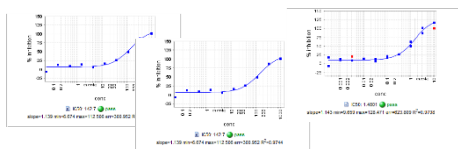
Re REGISTER
Chemical registration



Bi BIOREGISTER
Biological registration & sequence management

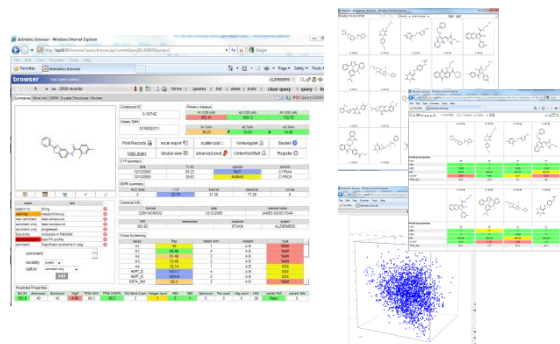


St STUDIES
Data screening and workflows

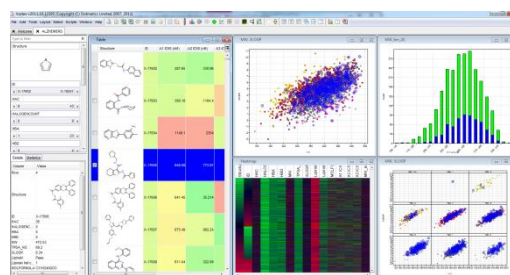


Stⁿ STUDIES NOTEBOOK
Electronic Laboratory notebook

Br BROWSER
Querying and reporting



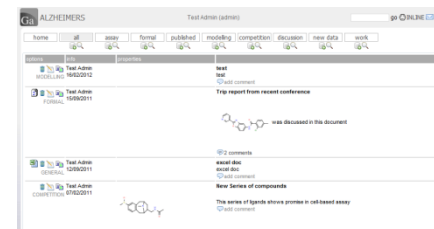
Vo VORTEX
Advanced analytics and visualisation



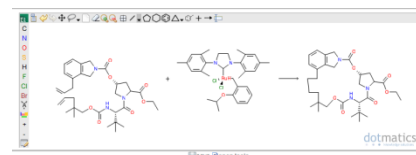
Nu NUCLEUS
Database upload

Pi PINPOINT*
Chemical cartridge

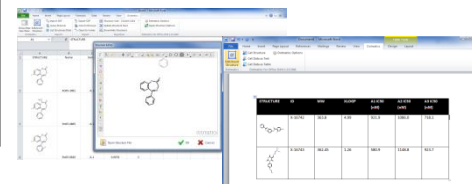
Ga GATEWAY
Document management and collaboration



E1 ELEMENTAL
Chemical sketching



D4O D₄O
Microsoft Office™ add-in



innovative

user-driven

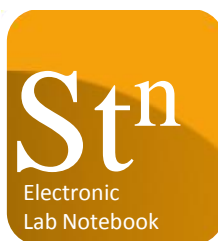
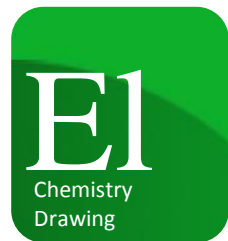
accessible

out-of-the-box

enterprise suite



Thank You



John Gatenby - Senior Account Manager

jg@dotmatics.com