

# STN<sup>®</sup>

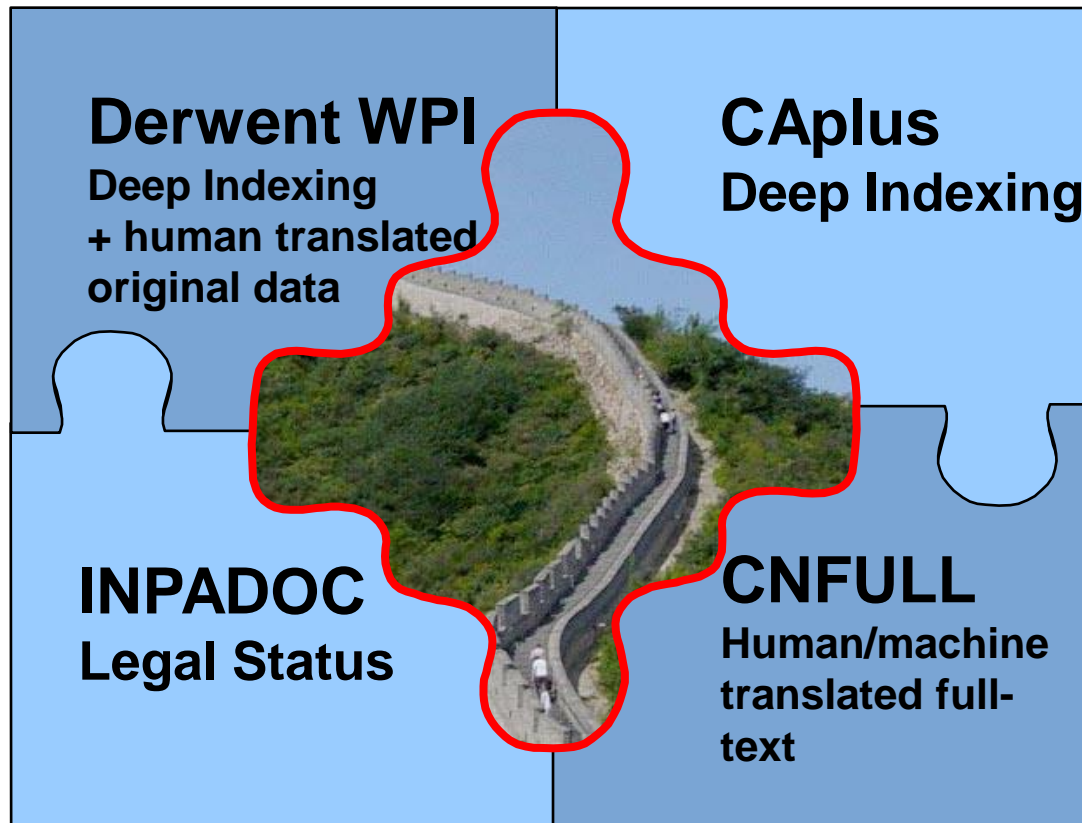
THE CHOICE OF PATENT EXPERTS<sup>™</sup>

## STN Product Review

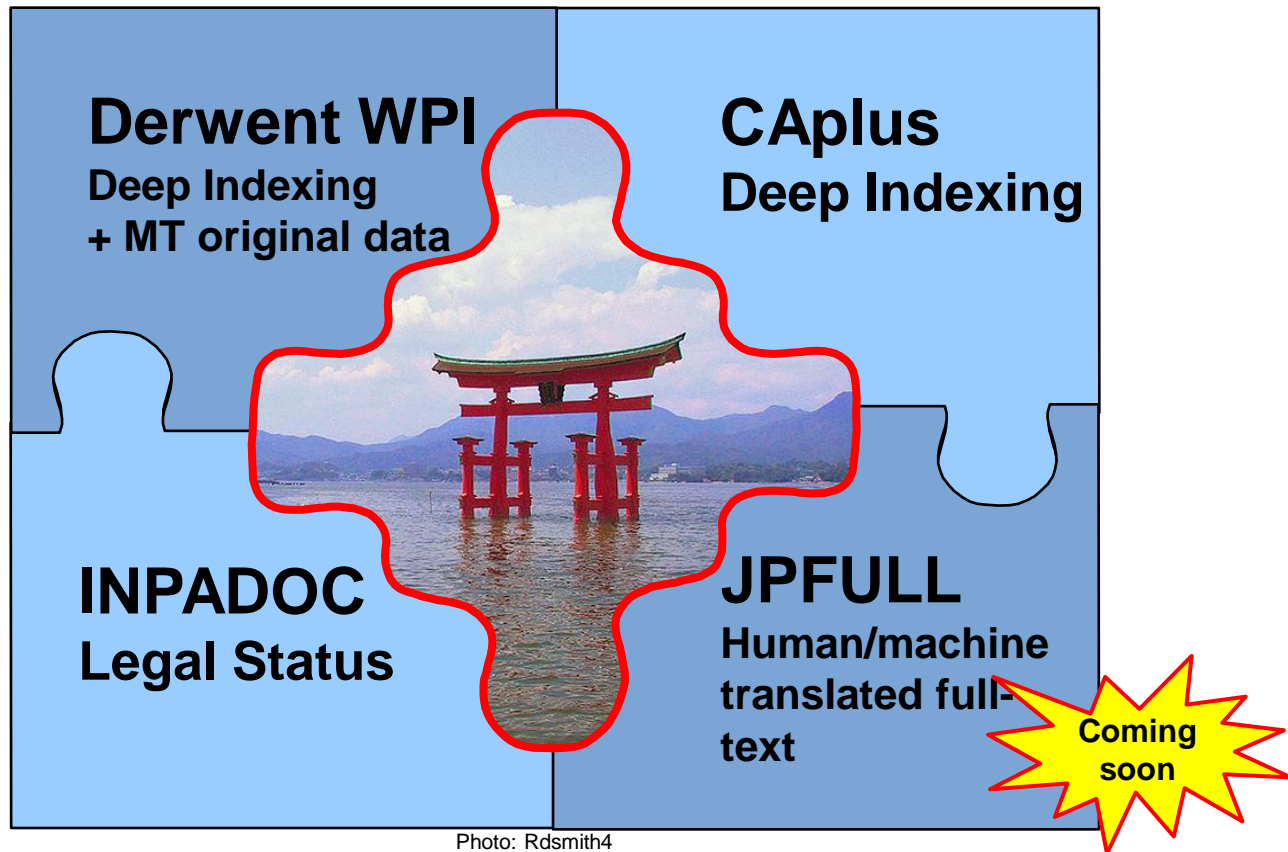
Dr. Elke Müller, FIZ Karlsruhe

ICIC 2012

# CNFULL complements STN's suite of value-added and first level Chinese patent data



# JPFULL will soon complement STN's suite of value-added and first level Japanese patent data



# Numeric property searching in the Derwent WPI on STN brings you to the heart of the invention

Example: Liposomes with a size of 100-150 nm

=> S 100-150 NM/LEN(P) (LIPOSOM? OR LIPID (W) VESICL?) /NOV

Use *proximities* to link the numeric search terms with keywords

Run your numeric search in the *novelty field* for highly relevant answers

L2 88 100-150 NM/LEN(P) (LIPOSOM? OR LIPID (W) VESICL?) /NOV

=> D TI HIT

L17 ANSWER 1 OF 88 WPIX COPYRIGHT 2012 THOMSON REUTERS on STN  
TI Liposomal formulation for ocular drug delivery, useful to treat e.g. glaucoma, comprises liposomes comprising lipid bilayer and a prostaglandin drug and/or a prostaglandin derivative e.g. latanoprost associated in the liposomes  
NOV NOVELTY - Liposomal formulation for ocular drug delivery comprises: liposomes comprising at least one lipid bilayer; and a prostaglandin drug and/or a prostaglandin derivative associated in the liposomes, where the liposomes have a mean diameter of less than 2  $\mu$  m.

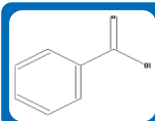
# STN is planning a timely implementation of CPC features, including a CPC thesaurus.

- The **C**ooperative **P**atent **C**lassification will replace ECLA and the US classification system, effective January 2013.
- A variety of search and display fields will be introduced, structured similarly to IPC.

=> S **A61K0009-7023/CPC (S) INVENTION/CPC .KW** **CODE**  
**ATTRIBUTE**

- The CPC thesaurus will support the hierarchy of the CPC-codes for search and display purposes.

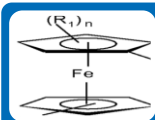
# Inorganic substances and patents have been added to ReaxysFile



Organic



Inorganic



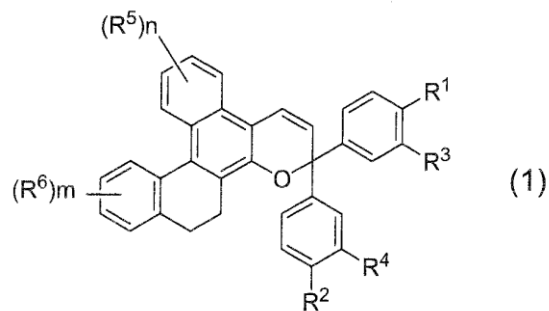
Organometallic

- Major substance database which now includes
  - 19 million substances
  - 16 million multi-step reactions
- Addition of **inorganic** substances
  - including coordination compounds and alloys
- Reactions and properties from selected **patents** included
- A special **REACH** display format is available

EP 2 275 418 A1

(54) CHROMENE COMPOUND

(57) A chromene compound represented by the following formula (1):



more details at: [http://www.stn-international.com/stn\\_chemistry\\_reaxysfile.html](http://www.stn-international.com/stn_chemistry_reaxysfile.html)

# PQSciTech on STN is an important source for scientific and technical information

## *Material Science*

SOLIDSTATE

EMA

METADEX

COPPERLIT

CORROSION

ALUMINIUM

MATBUS

CERAB

MECHENG

## *Life Science and Environmental Science*

HEALSAFE

AQUASCI

OCEAN

BIOENG

ANTE

LIFESCI

POLLUAB

ENVIRONENG

WATER

AQUALINE

## *Aviation*

AEROSPACE

## *Construction*

CIVILENG

## *Information*

ELCOM

COMPUAB

## *Other*

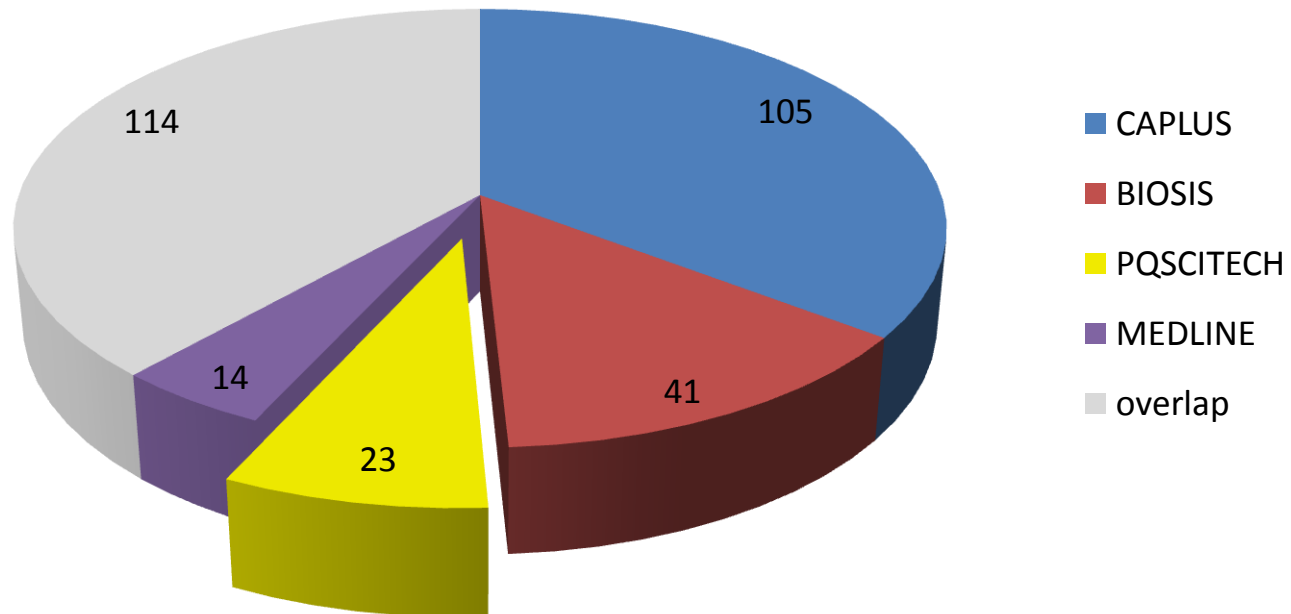
LISA

CONFSCI

# PQSciTech gives unique results relevant for prior-art searching

Example: Bioremediation of soils with DFPASE



Results of the multifile search (NPL) in  
CAPLUS, BIOSIS, PQSCITECH, MEDLINE



Almost 10% of the total no. of records (297) for this biochemical search are unique to PQSciTech: unique CT-information, unique sources, enhanced abstracts



# New STN alert functionality and biomedical content enhance pharmacovigilance support

- New biomedical content on STN enhances currency and comprehensiveness
  - Conference abstracts and reviews added to Embase™
  - Articles in Press being added to Embase Alerts (coming soon) 
  - Emtree thesaurus now updated three times per year
  - ePub Ahead of Print records now available in MEDLINE®
- Alert enhancements make it easier to set up and deliver critical current awareness information
  - RSS delivery of SDI results
  - Weekly SDI packages
  - SDI STANDARD – streamlined SDI set-up (coming soon) 

# STN<sup>®</sup>

THE CHOICE OF PATENT EXPERTS<sup>™</sup>

For more information ...

FIZ Karlsruhe – E-mail: [helpdesk@fiz-karlsruhe.de](mailto:helpdesk@fiz-karlsruhe.de)

Support and Training: [www.stn-international.de](http://www.stn-international.de)

CAS – E-mail: [help@cas.org](mailto:help@cas.org)

Support and Training: [www.cas.org](http://www.cas.org)