



Knovel[®]

**The Changing Face of
Scientific Reference**

Leslie Lees

**Director of Product Management
Knovel Corporation**

Complex Information Ecology

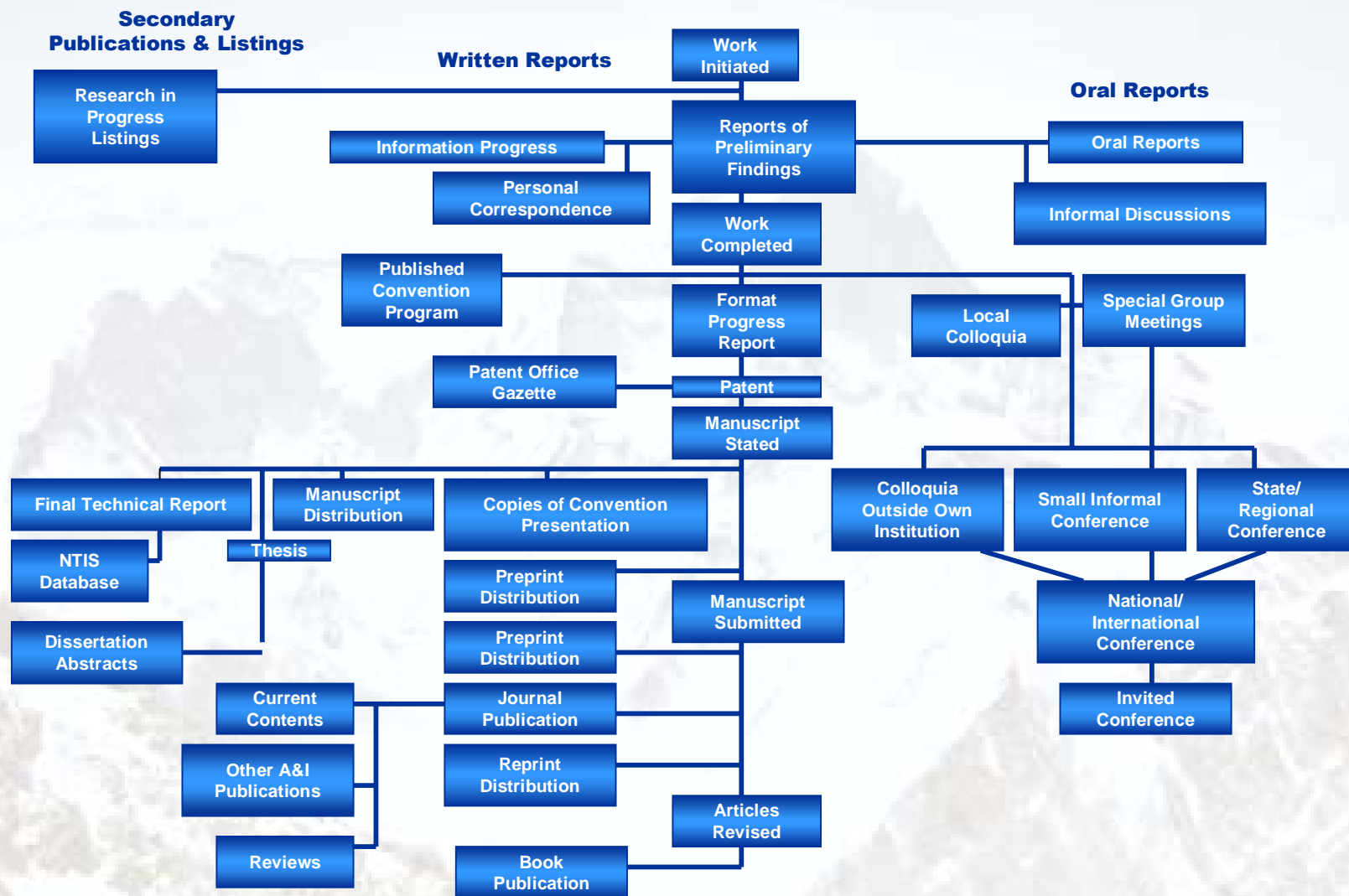
❖ **DISCOVERY**

❖ **COMMUNICATION**

❖ **ACCESS**

❖ **PRESERVATION**

Scholarly Communication



Reference Books: *Not Your Normal E-Book*

- ❖ **Reference books are grouped together in a library. They function better when cross- referenced.**
- ❖ **They function best when they are accessible at the point of use.**
- ❖ **They cannot be borrowed. They are for lookup by multiple people.**
- ❖ **They are updated often.**
- ❖ **They are structured as databases and indexes even in book format.**
- ❖ **They are utilitarian. Focus on look-up and use.**

Knovel Service

- ❖ **Database Subscription Model – Aggregation and Frequent Updates**
- ❖ **Internal Links and Index Structure – Aggregation, Integration and Enhanced Discovery**
- ❖ **Data Normalization – Integration of Multiple Content Types**
- ❖ **TOC Structure – Browsing and Lookup Integrated with Search**
- ❖ **Federated Search – Multiple Points of Access and Means of Discovery**
- ❖ **Analytical Tools – Workflow Integration and Utility**

Hybrid Functionality

❖ **Meta Publisher:**

- **Adding Value by Aggregation and Integration**
- **Enhancing Unique Structural Features**
- **Applying analytical tools to data elements**

❖ **Reference Service**

- **Providing Answers to the Remote Desktop**
- **Delivering Access to Hard to find information**
- **Making Favorite Titles More Useful**

❖ **End User Tool**

- **Facilitating Peer to Peer Communication**
- **Enhancing Productivity With Analytical Tools**

Navigation and Discovery

❖ **Early and Late Stage Discovery Strategies**

- **Berry Picking**
- **Orienteering**
- **Directed Search**
- **Parametric Search**
- **Browsing**
- **Look-up**

Adding Value

- ❖ **Aggregation as viewed from the user perspective**
- ❖ **Transforming complex reference books into deeply and easily navigable electronic databases**
- ❖ **Bringing data elements to life with analytical tools**

Modify Search Criteria or [Reset](#) to Perform a New Search.

Search for:

Search

Query Example: "polyphenylene oxide" AND chemical resist*

[Search Tips](#) ▶

Search in:

Entire Knovel Library My Subscription

Search Query: (bolts)
No. of Titles Retrieved: 355

Browse Search Results in: [Entire Knovel Library](#) [My Subscription](#)

[All Titles](#) [New Titles](#) [Updated Titles](#) [Titles with Productivity Tools](#)

Sort by: Relevancy Subject Title Name Popularity

Titles

Relevancy

2004 ASME Boiler and Pressure Vessel Code, Section II - Materials ★	100%
2001 ASME Boiler and Pressure Vessel Code, Section II - Materials (Includes 2002 and 2003 Addenda) ★	100%
2004 ASME Boiler and Pressure Vessel Code, Section II - Materials (Includes 2005 Addenda) ★	95%
Military Handbook - MIL-HDBK-17-1F: Composite Materials Handbook, Volume 1 - Polymer Matrix Composites Guidelines for Characterization of Structural Materials	74%
Standard Handbook of Machine Design (2nd Edition)	73%
Mechanical Engineer's Reference Book (12th Edition)	73%
Civil Engineer's Reference Book (4th Edition)	73%
Process Engineering Equipment Handbook	73%
Building Design and Construction Handbook (6th Edition)	73%
Mechanical Engineers' Handbook (2nd Edition)	73%
Piping Handbook (7th Edition)	73%
Construction and Structural Adhesives and Sealants - An Industrial Guide	73%
Machinery's Handbook (26th Edition)	73%
Cold-Formed Steel Design (3rd Edition)	72%

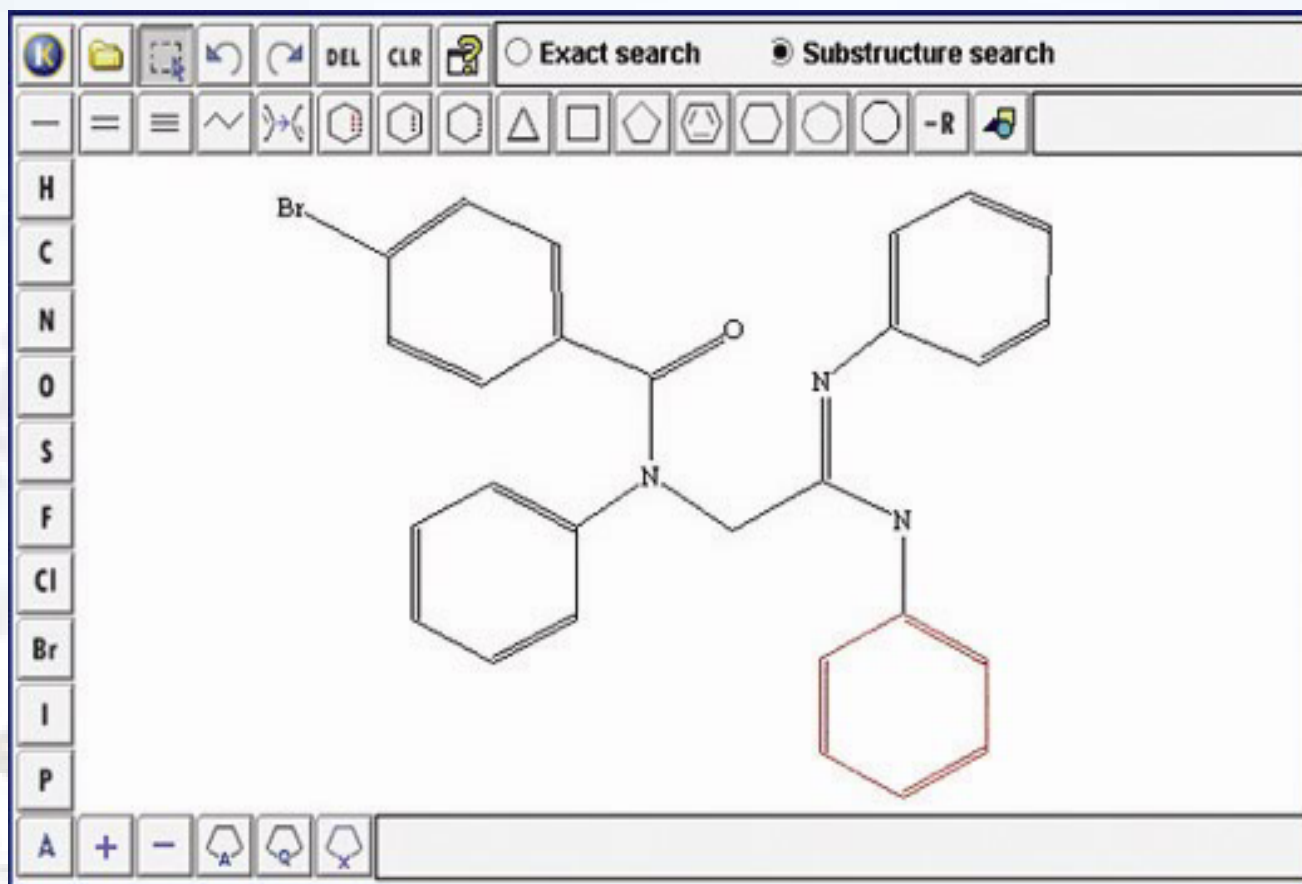
Analytical Tools

- ❖ **Interactive Tables**
- ❖ **Equation Plotter**
- ❖ **Graph Digitizer**
- ❖ **Graph Plotter**
- ❖ **Equation Solver**
- ❖ **Unit Converter**

Next Generation

- ❖ **Chemical Structure Searching**
- ❖ **Advanced Search**
- ❖ **Hybrid Software/Content Tools:**
 - **Structural and Mechanical Design**
 - **Material Selection**
- ❖ **Multimedia**

Chemical Structure Search



Beam Design Tool

File Edit Options Calculate Help

U.S. Figure properties Section properties

Figure Parameters:

Width: in

Height: in

Centroid:

X: in

Y: in

Area: in²

Moments of Inertia:

Ix: in⁴

Iy: in⁴

Product of Inertia:

Ixy: in⁴

Figure Material:

Material Label:

Density: lb/in³

Modulus of Elasticity: 10³*ksi

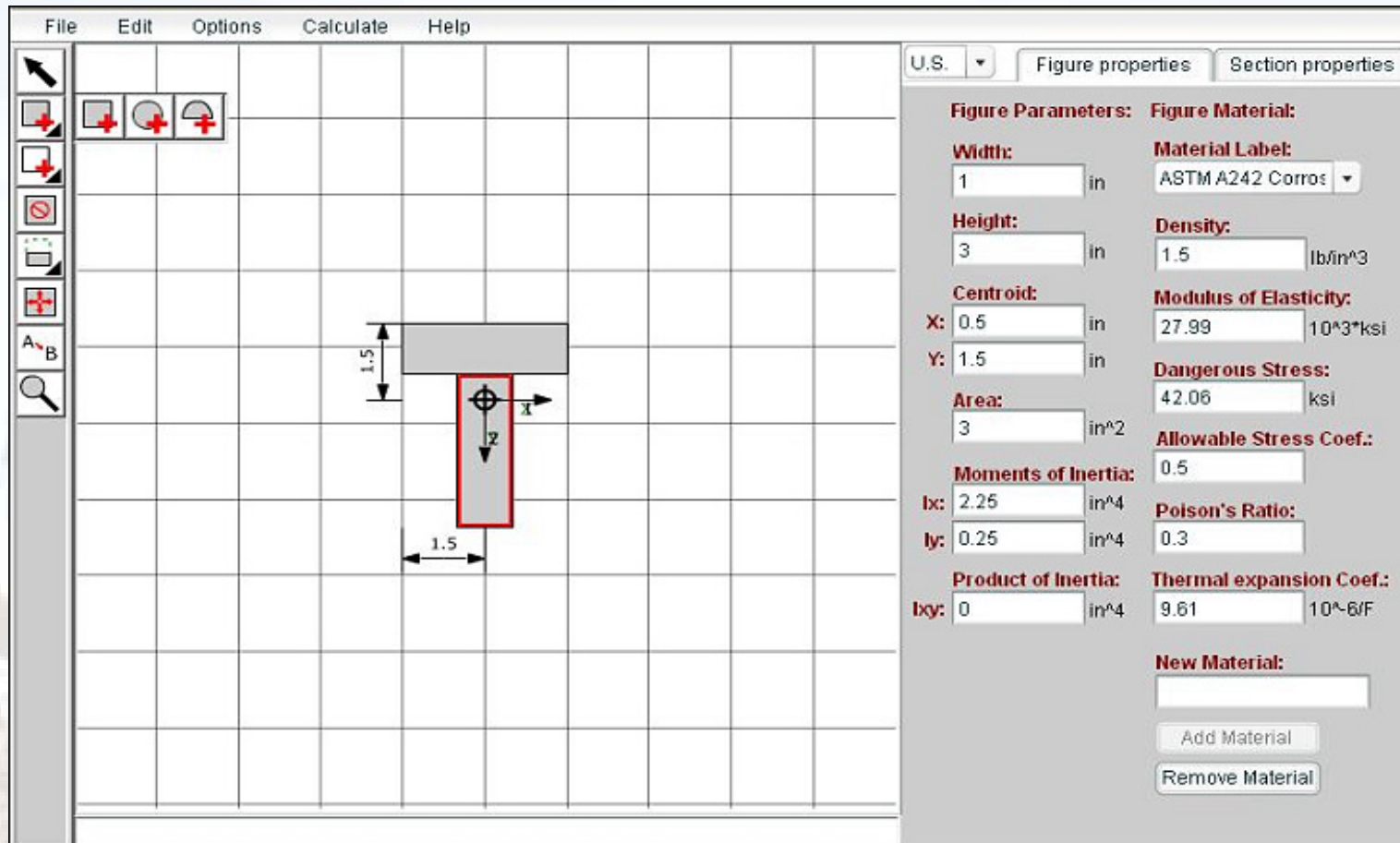
Dangerous Stress: ksi

Allowable Stress Coef.:

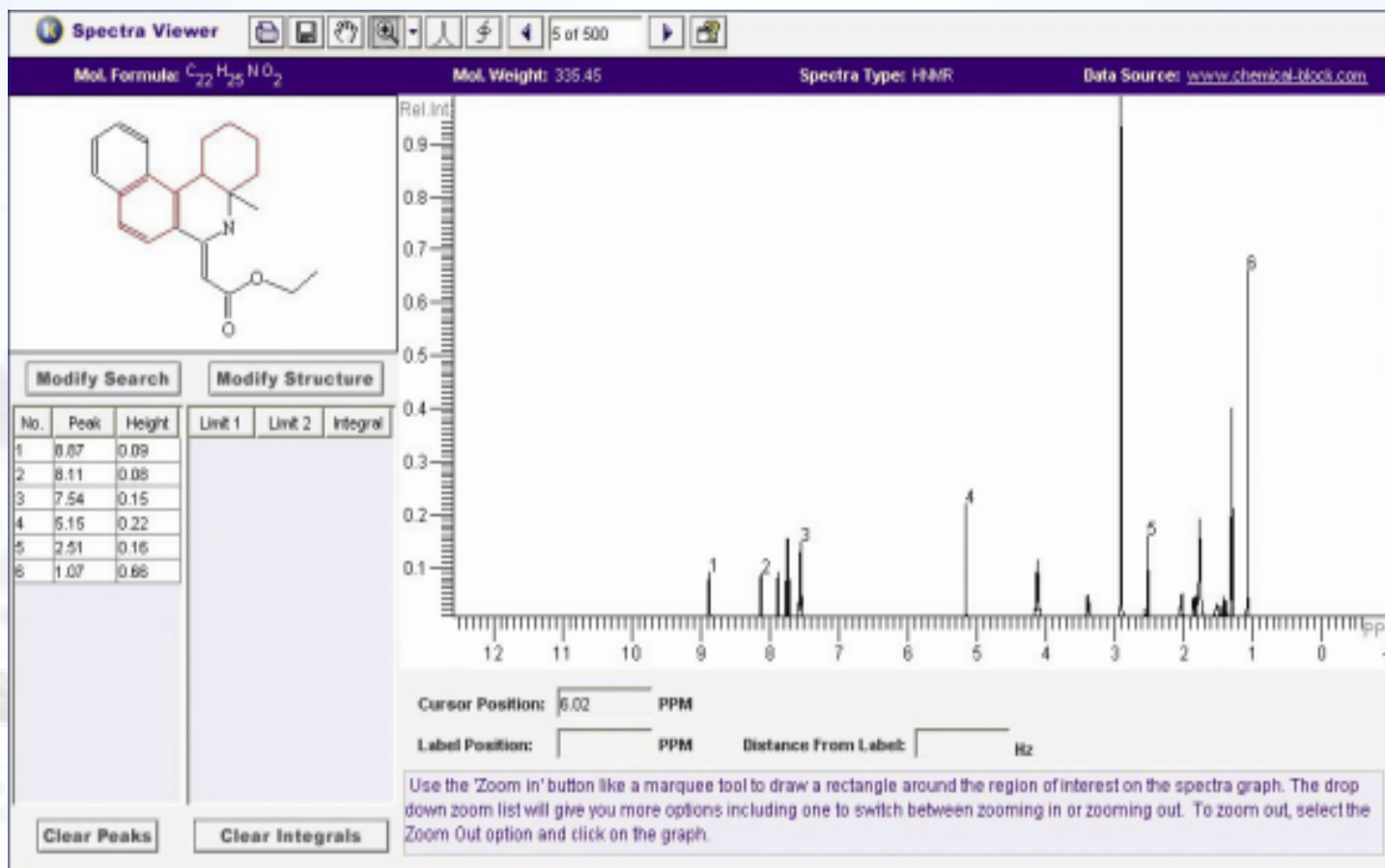
Poisson's Ratio:

Thermal expansion Coef.: 10⁻⁶/F

New Material:



Spectra Viewer



Development Drivers

- ❖ **Workflow Integration**
- ❖ **Intuitive Patterns of Discovery**
- ❖ **Peer to Peer Communication**
- ❖ **Shared Workflow**
- ❖ **Awareness, Access, and the Open Web**
- ❖ **Shared End User Focus With Librarians**