



The new generation of Semantic Web  
based solutions for the organization of  
corporate knowledge

**Charles Huot**

**CEO**

**Copyright ©2005 Temis  
All Rights Reserved**



# Concepts

**Select, organize, publish**

- Publication
- Multi media diffusion

**Navigate, search, get alerts**

- Semantic Search
- Full text search
- Link navigation
- Generate alerts

**Federate distributed contents**

- Search engine : semantic extension
- Annotation based on a common terminology
- Semantic mediation

**Classify, annotate contents**

- Add metadata
- Classify on business terminology
- Classify on knowledge

**Share common business referential**

- Taxonomies
- Business driven model
- Knowledge representation

**Share common vocabulary**

- Terminology
- Thesaurus
- Controlled vocabulary
- Metadata repository



# Topic Management

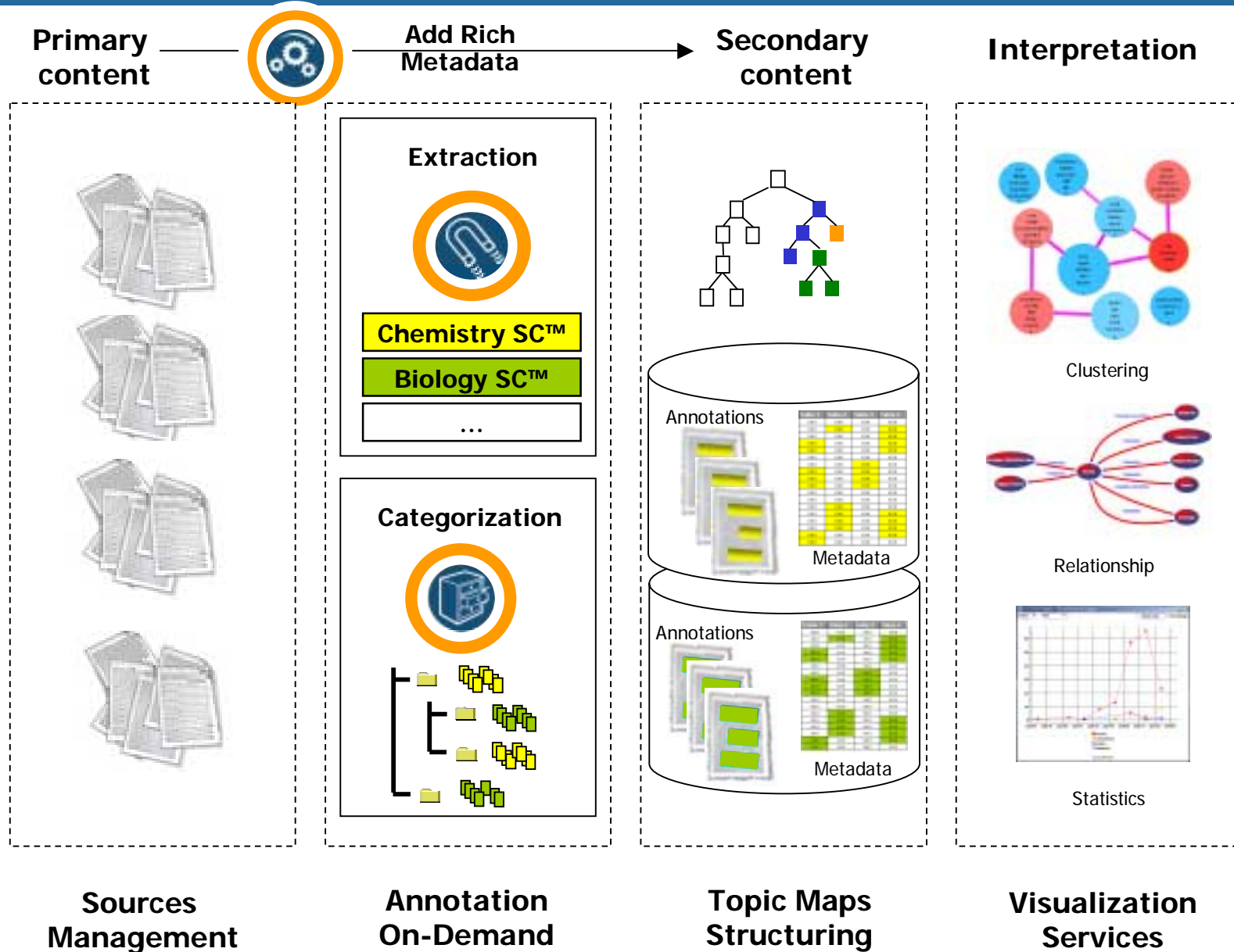


- Thesauri and knowledge bases management
  - Annotation and classification with thesauri and KB
  - Consistency with thesauri and KB ensured
- Search and retrieval
  - Advanced search capabilities
  - Visual components for navigation
- Collaboration
  - Different workspaces are available
  - User profile management and push profile
  - Information life cycle management
- Standards



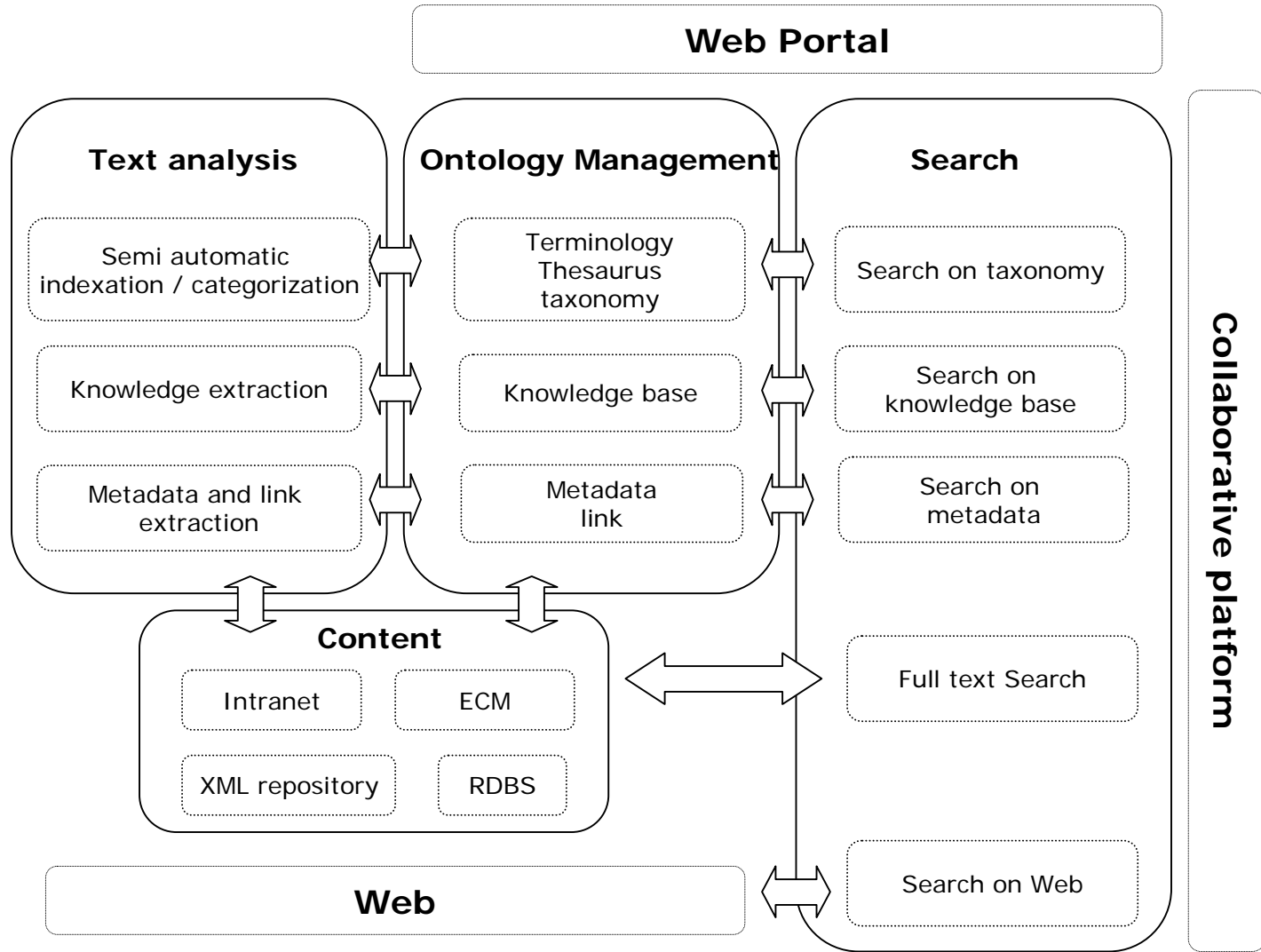


# The big picture





# General architecture





# Information Extraction - overview

Input sentence:

*Immunoprecipitation with anti-bcl2 antibody, followed by immunoblotting with anti-bax antibody, showed that both the 21-kDa bax protein and the 18-kDa protein heterodimerized with bcl-2 protein.*

Extracted Information:

the 21-kDa bax protein and the 18-kDa protein heterodimerized with bcl-2 protein.



# Labelling

Input  
text

Here we show that BАРF1-transfected, EBV-negative Akata cells activated Bcl2 expression and induced tumor formation when they were injected into SCID mice.

Labelled  
text

Here we show that BАРF1-transfected, EBV-negative Akata cells activated `[[[Bcl2||ExtProtein||596@LOCUSLINK@HUMAN@BCL2]]]` expression and induced tumor formation when they were injected into SCID mice.

Labels

Form in text

Unique identifier

Normalized name

Standard label

Species



# Biological Entities

Protein-Gene	→	transaminases, S100B-p53 complex
Cell-Tissue	→	hepatocytes, bone marrow
Species	→	obese Zucker rats, cytomegalovirus
Genetic Population	→	recombinant inbred mouse strains
Process	→	apoptosis, cell growth
Disorder	→	drug toxicity
Therapy-Analysis	→	PCR analysis
Molecules	→	Dimethyl sulfoxide ( DMSO )
Genetic Information	→	snoRNA, proximal chromosome 17
Anatomy	→	central nervous system, oropharynx





# Relationships types

activation → Apoptosis is induced by depsipeptide

inhibition → the suppression of cell growth

regulation → Depsipeptide-mediated apoptosis

localization → the translocation of Bax

expression → the CD95/Fas expression level in tumor cells

binding → the p53 binding site on S100B

interaction → the phosphorylation of RB1



# Information Extraction

Relation navigation

<b>Chemical Entity</b>	125 docs 140 entities	
<b>Chromosomal And Genomic Information</b>	61 docs 67 entities	
<b>Disorder</b>	88 docs 77 entities	
<b>General Anatomy</b>	2 docs 2 entities	
<b>Genetic Population</b>	54 docs	

Filter :  OK

Labelled Entities/Labelled MeSH Use Count

- Labelled Entities/Labelled MeSH
  - MeSH
    - C Diseases
      - C23 Pathological Conditions Sig
      - C21 Disorders of Environmental
      - C19 Endocrine Diseases
      - C18 Nutritional and Metabolic D
      - C17 Skin and Connective Tissu
      - C16 Congenital Hereditary and

## 3T3L1 adipocytes

### Expression

- the effects of expressing the **preproinsulin gene** in **3T3L1 adipocytes** on ( **pro** ) insulin release
- Over-expression of **munc18c** in **3T3L1 adipocytes** inhibited insulin-stimulated **glucose transport**

### Localization

- 3T3L1 adipocytes** is localized in **GLUT4** vesicles

### Activation

- concomitant up-regulation of **PAI-1** in **3T3L1 adipocytes**
- the effects of expressing the **preproinsulin gene** in **3T3L1 adipocytes** on ( **pro** ) insulin release

### Activation of Activation

- insulin-induced proinsulin release from **3T3L1 adipocytes** expressing the **insulin gene**

### Negation of Activation

- Over-expression of **munc18c** in **3T3L1 adipocytes** inhibited insulin-stimulated **glucose transport**

### Regulation

- TC10** is able to modulate **actin** structure in **3T3L1 adipocytes**



# Information Extraction

Navigate into : Docs containing words laser (limit 1 000) : 1000 docs.

Relation navigation

Process	69 docs 38 entities
Protein Gene	265 docs 419 entities
Species	214 docs 29 entities
Therapy And Analysis	93 docs 57 entities
Unclassified Biological	157 docs

drug

Expression

- the gene expression of major **drug**
- Better proinsulin-to-insulin** processing was noted with increasing **drug** doses
- Expression of **alpha-actin** in the **intima** of **FK778-treated rats** was significantly reduced when the **drug**
- the dose of **drug** and the amount of **chimeric receptor** expressed in **AAV-transduced cells**
- HepG2 cells** transduced with **adeno-associated viral ( AAV )** vectors encoding **LFv2IRE** , **AP20187** induces **LFv2IRE** homodimerization and **transphosphorylation** minutes after **drug** administration
- expression of **Pgp** and other **drug** efflux transporters
- a mutated **FKBP12** domain to express an inducible **caspase-9** molecule ( **iCaspase-9** ) that can be activated by a cell-permeable dimerizer **drug**
- the expression of alternative types of **sulphonylurea receptor** , with non-identical **drug** binding **sites** .
- brain-specific **drug** transport and changes in **microvascular** gene expression in **brain diseases**
- overexpression of the **P-glycoprotein ( P-gp )** **drug** pump
- multiple drug resistance ( **MDR** ) gene expression in endothelial cells ( **ECs** ) isolated from temporal lobe blood vessels of patients with refractory **epilepsy**



# Information Extraction

Docs of cluster /1/ (Analytics) dans ( Docs of cluster /1/ (Analytics) dans ( Docs containing words diabetes, containing concept (s) (/... 1/39

**Date:** Aug 25, 2003

**Source:** J Autoimmun

**Medline ID:** Pubmed-12935783

**Author(s):** Roberts Samantha A, Barbour Gene, Matarrese Marissa R, Mason David L, Leiter Edward H, Haskins Kathryn, Hanson Matthew S

## Adoptive transfer of islet antigen-autoreactive T cell clones to transgenic NOD.Ea(d)mice induces diabetes indicating a lack of I-E mediated protection against activated effector T cells.

Transgenic insertion of the MHC class II Ea(d)gene in NOD mice restores I-E expression and prevents T-cell-mediated autoimmune diabetes (IDDM). The specific molecular and cellular mechanisms responsible for the diabetes resistance of transgenic NOD.Ea(d)mice remain unclear. We adoptively transferred islet antigen-specific T cell clones into NOD and transgenic NOD.Ea(d)mice to evaluate the level of protection provided by I-E expression against activated effector T cells. We have found that neither neonatal or 3-5-week-old I-E-expressing NOD.Ea(d)mice can completely inhibit the diabetogenic activities of activated islet antigen-specific T cell clones. These data indicate that Ealpha protein expression in NOD antigen presenting cells (APC) does not reduce islet autoantigen presentation in the context of I-A(g7)below the threshold required for stimulation of effector/memory diabetogenic T cells. Our results suggest that the mechanism of Ealpha protein-mediated diabetes resistance in NOD mice may be "antigen ignorance," in which the quantity of islet autoantigens presented in the context of I-A(g7)by APC is reduced below the threshold required to activate naive islet antigen-specific T cells.

### Extractions

- Extraction
  - Entities in Context
    - Relation
      - Activation Relationships
      - Expression Relationships
      - Inhibition Relationships
        - Negation of Inhibition
      - Regulation Relationships
    - Labelled Entities
    - Other Entities
      - Protein Gene
      - Species
      - Cells And Tissues
      - Genetic Population
  - Labelled Entities
    - All MeSH Labels
    - All Prominer Labels
    - All PubChem Labels
  - External
    - Click to highlight
    - Creator
    - Organisation
    - Source



# Information Extraction

Summarize: Docs containing Activation Relationships dans ( Docs containing words diabetes, containing concept... : 20 docs. ▾

Parameter

Extractions: Entities in Context ▾

Sections: [all] ▾

Radius: 1

Summarize

Concepts

- Labelled Entities (82K, 351K)
- Other Entities (91K, 470K)
- Relation (104K, 405K)
  - Activation Relationship
  - Binding and Interaction
  - Binding Relationships
  - Expression Relationship
  - Inhibition Relationship
  - Interaction Relationship
  - Localization Relationship
  - Regulation Relationship
  - Unclassified Informa

Summary

Docs containing **Activation Relationships** dans

Summarize Docs containing words **diabetes**, containing concept(s) (**Genetic Population and Activation of Localization**)

20 docs using extraction **Entities in Context**  
Using only feature **Localization Relationships**

**PKC-(varepsilon)-dependent survival signals in diabetic hearts.**

**Role of the insulin-regulated aminopeptidase IRAP in insulin action and **diabetes**.**

Investigations are underway to determine the in vivo substrates for IRAP and to measure the effect of insulin on the cleavage of identified substrates. In **individuals with type 2 diabetes** the insulin-stimulated translocation of IRAP to the **cell surface of muscle and fat cells** is impaired. This defect may lead to decreased cleavage and consequently increased action of peptide hormones that are substrates for IRAP.

**Control of arterial pressure by angiotensin II and nitric oxide at the onset of **diabetes**.**

**Aberrant insulin-induced GLUT4 translocation predicts glucose intolerance in the offspring of a diabetic mother.**

**Aberrant insulin-induced GLUT4 translocation predicts **glucose intolerance** in the offspring** of a diabetic mother.

**Peptide and major histocompatibility complex-specific breaking of humoral tolerance to native insulin with the B9-23 peptide in **diabetes-prone and normal mice**.**

**Impairment of glucokinase translocation in cultured hepatocytes from OLETF and GK rats, animal models of type 2 **diabetes**.**

We examined **sugar-induced translocation of glucokinase in cultured hepatocytes** from Otsuka Long-Evans Tokushima Fatty and Goto-Kakizaki rats, animal models of type 2 **diabetes**, and compared this with that in Long-Evans Tokushima Otsuka and Wistar rats, respectively, as control strains. When hepatocytes from the four strains were incubated with 5 mM glucose, glucokinase was present predominantly in the nuclei. **Higher concentrations of glucose, 5 mM glucose plus 1 mM fructose, and 5 mM glucose plus 1 mM sorbitol** all induced the translocation of **glucokinase** from the nucleus to the cytoplasm in hepatocytes from these rats. The extent of glucokinase translocation under these conditions, however, was less marked in both diabetic rat types than in the control rats. The extent of **the phosphorylation of glucose** as estimated by the release of  $^3\text{H}_2\text{O}$  from [2-  $^3\text{H}$ ] glucose is significantly lower in Goto-Kakizaki rats than in Wistar rats. The results indicate that **the translocation of glucokinase is impaired in the hepatocytes of diabetic rats**. They also suggest that **the impaired translocation of glucokinase is associated with abnormal hepatic glucose metabolism in type 2 diabetes**.

...

**Impairment of **glucokinase** translocation in cultured hepatocytes from OLETF and GK rats, animal models of type 2 **diabetes**.**



File Documents Template Analyze

The present invention relates to new me  
 [H1] FIELD OF THE INVENTION  
 The present invention relates to  
 [H1] BACKGROUND OF THE INVENTION  
 It is known from the prior art that  
 Generally, the central effects are  
 The side-effects of the  $\beta$ -sympat  
 [H1] DESCRIPTION OF THE INVENTION  
 [H1] Results of the Experiment  
 [H1] Material and Methods  
 [H1] Results  
 [H1] Evaluation  
 [H1] BRIEF DESCRIPTION OF THE DF  
 [H1] We claim:  
 1. A pharmaceutical composition  
 2. The pharmaceutical composi  
 3. A process for the production  
 4. A method of treating respirato  
 5. The method according to clai

[P] 4. The substantially-improved therapeutic effect can be associated with the advantage of minimal cardiac

A substantially-improved therapeutic effect can be associated with the advantage of minimal cardiac

<Embedded table with reference: TABLE-US-000  
 <Embedded table with reference: TABLE-US-000  
 <Embedded table with reference: TABLE-US-000  
 <Embedded table with reference: TABLE-US-000  
 <Embedded table with reference: TABLE-US-000  
 <Embedded table with reference: TABLE-US-000

[H1] BRIEF DESCRIPTION OF THE

FIG. 1 shows the influence of 3  $\mu$ g [formoterol fumarate](#) on the bronchial resistance

FIG. 2 shows the influence of 10  $\mu$ g [formoterol fumarate](#), 10  $\mu$ g [tiotropium bromide](#) and a combination of 3  $\mu$ g [tiotropium bromide](#) +3  $\mu$ g [formoterol fumarate](#) on the bronchial resistance of narcotized dogs, n=6.

[H1] We claim:

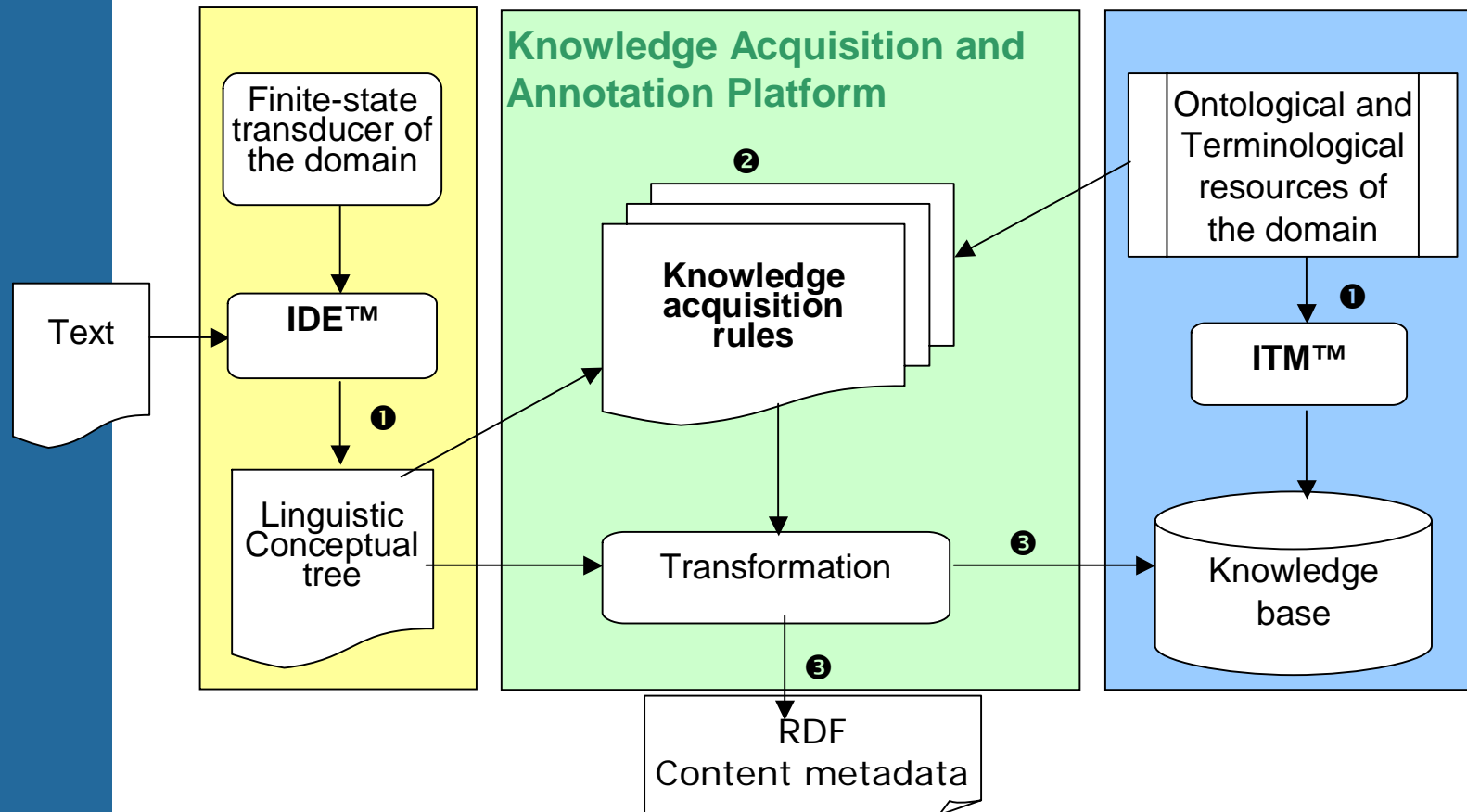
1. A pharmaceutical composition comprising:
  - (a) [tiotropium bromide](#); and (b) [formoterol fumarate](#).
2. The pharmaceutical composition according claim 1, wherein the pharmaceutical composition is inhaled.
3. A process for the production of a pharmaceutical composition according to claim 1, comprising:
  - (a) mixing [tiotropium bromide](#), and [formoterol fumarate](#); and optionally (b) adding an adjuvant and/or carrier materials.
4. A method of treating respiratory ailments by administering to a host in need of such treatment a pharmaceutical composition according to claim 1.
5. The method according to claim 4, wherein the respiratory ailment is asthma or chronic obstructive pulmonary disease (COPD).

INO: 1  
 Type: name  
 Name: tiotropium bromide

no file opened | us:baseTemplate.xsl | 11.07.2005 | 08:34



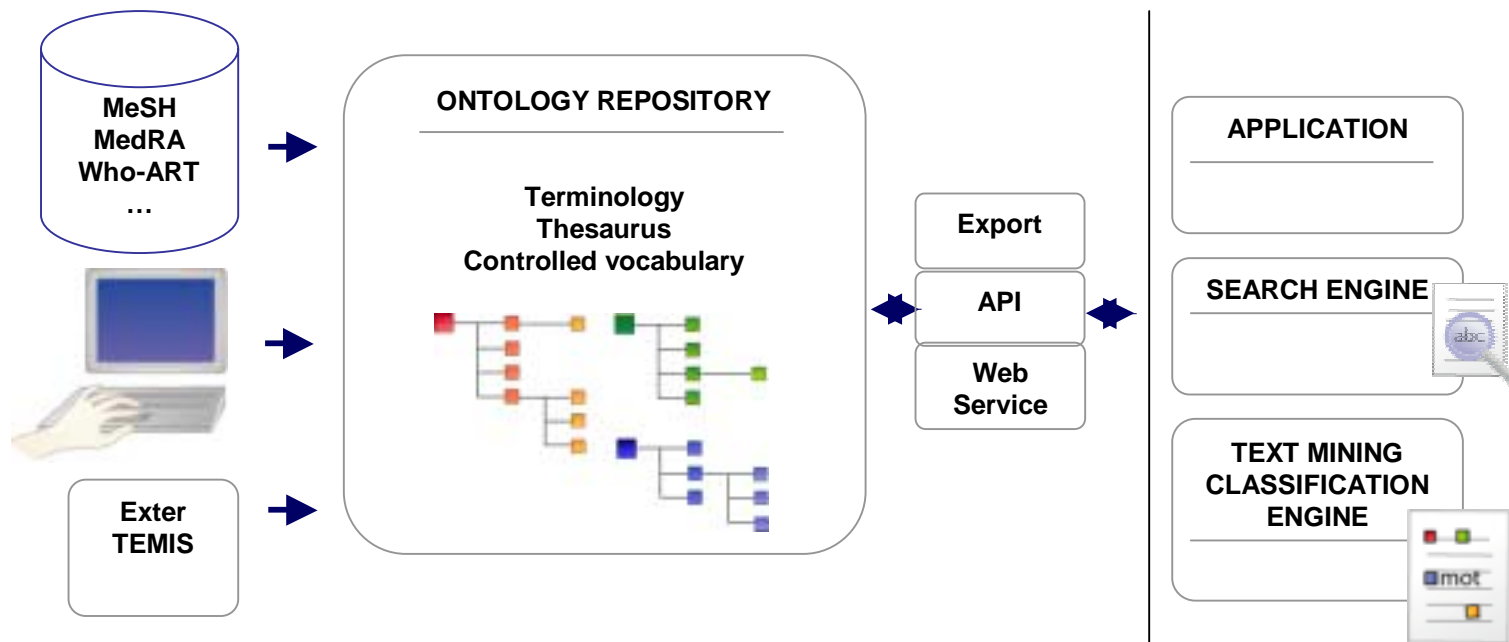
# Semi-automatic ontology population and content annotation process



1. Information extraction by the IDE™ and ontology modeling in ITM™
2. Mapping of the extracted semantic tags with the concepts and relations modeled in the ontology
3. If any mapping between a semantic tag and a concept, then creation of new instances of this concept, its properties and its relations in the knowledge base and/or of a RDF annotation if pertinent in the context of the application



# Terminology, Controlled vocabulary, Metadata repository

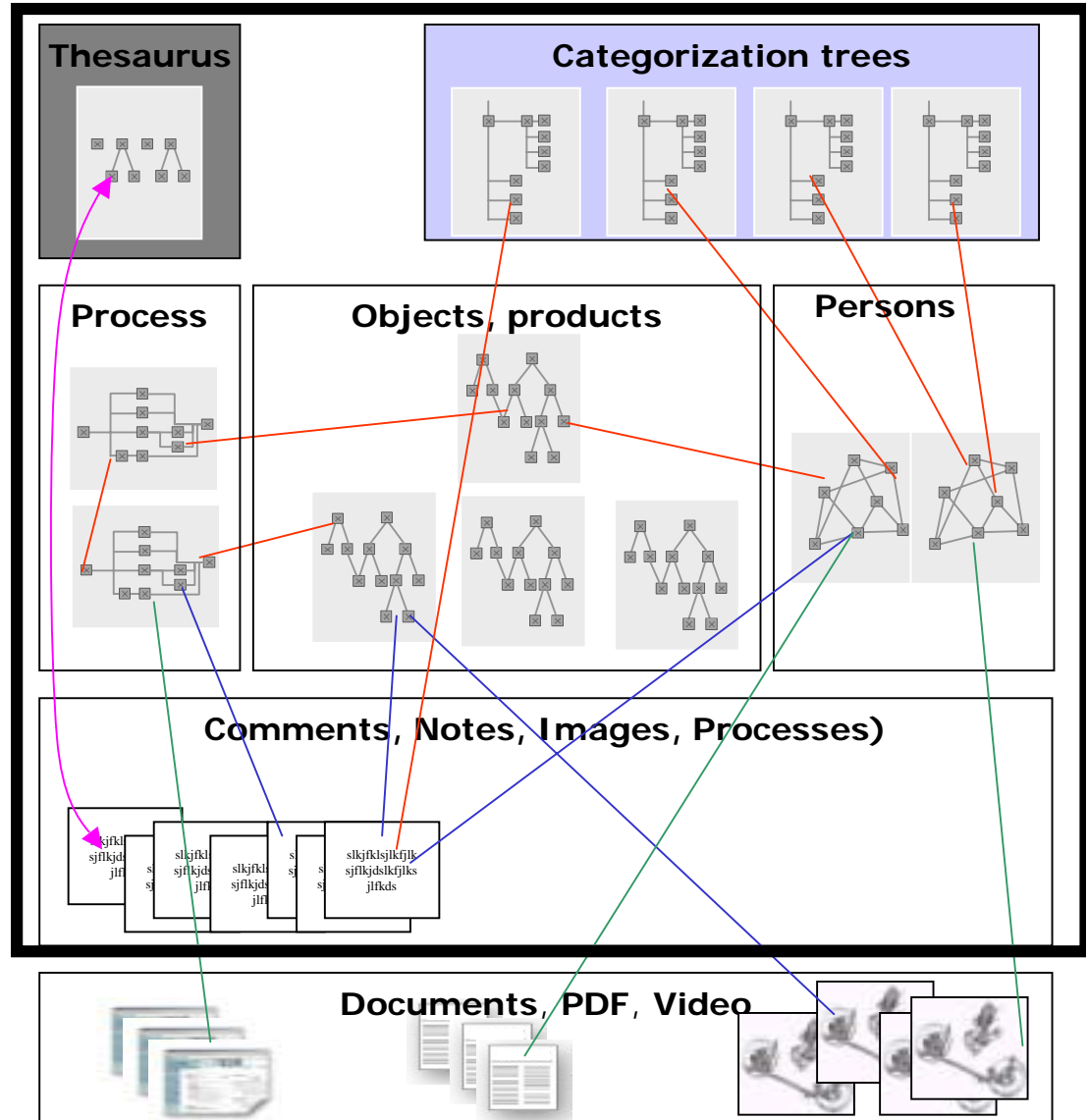






# Topic Maps Structuring

- ⊗ Classifications
- ⊗ Thesaurus et glossaries
- ⊗ Business vocabularies
- ⊗ Taxonomies
  
- ⊗ Subject Matters
- ⊗ Knowledge Links
- ⊗ Processes
  
- ⊗ Relations
  
- ⊗ Files
- ⊗ Publications
- ⊗ Website organization



Prustate cancer - Microsoft Internet Explorer

Fichier Edition Affichage Favoris Outils ?

Précédente Recherche Favoris

Adresse http://localhost:65000/audit/Center.action?id=104253

Administrateur LifeScience dans LifeScience Knowledge Base Dossier : Pas de dossier actif

Chercher : bisxin dans All

TERME

CREER

Descriptor

HISTORIQUE

- home
- folder
- abbott laboratories inc.
- prostate cancer
- bixin
- cancer de la prostate
- bixin
- abbott laboratories inc.
- prostate cancer

## PROSTATE CANCER

Descriptor, Terme [ACTIONS]

### Informations générales

<b>French</b>	Cancer de la prostate
<b>Synonyme, UF</b>	prostate-cancer prostatic adenocarcinoma adenocarcinoma
<b>Classifying Term, Terme d'indexation</b>	True
<b>Comment</b>	Translation and attachment of documents in German to be done Yes we are waiting for the new german terminology manager to be available (he is on the X34 project today)
<b>Level, Niveau</b>	3
<b>Link</b>	définition cancer de la prostate (fr) definition (en)
<b>Note d'application, Scope Note</b>	Cancer begins in cells, the building blocks that make up tissues. Tissues make up the organs of the body.

### Types d'associations

BT-NT, TG-TS.

- Cancer
  - Bladder cancer
  - Brain tumours
  - Breast cancer
  - Bronchial cancer
  - Colon cancer
  - Leukaemia
  - Liver cancer
  - Lung cancer
  - Oral cancer
  - Prostate cancer

[ACTIONS]

- Editer
- Supprimer
- Remonter au top
- Ajouter au dossier
- Commenter
- Docs. indexés
- Metadonnées
- Graphie
- Créer
- Ajouter à côté
- Ajouter dessous

[SELECTION]

- Sélectionner
- Effacer
- Relier à
- Déplacer sous

[RELATIONS]

Suppr. relations

- \* Ageing

http://localhost:65000/audit/Center.action?id=104253# Intranet local

Cancer de la prostate - Microsoft Internet Explorer

Fichier Edition Affichage Favoris Outils ?

Précédente Recherche Favoris

Adresse http://localhost:65000/audit/SwitchDisplayLanguage.action?topicId=104253&langId=80

Administrateur LifeScience dans LifeScience Knowledge Base Dossier : Pas de dossier actif

Chercher :  dans : All

home début exact

home folder abbot laboratories inc. prostate cancer biaxin cancer de la prostate biaxin abbot laboratories inc. prostate cancer

## CANCER DE LA PROSTATE

	Anglais	Prostate cancer
<b>Synonyme, UF</b>		cancer prostatique
<b>Classifying Term, Terme d'indexation</b>		True
<b>Level, Niveau</b>		3
<b>Link</b>		définition cancer de la prostate (fr) definition (en)
<b>Note d'application, Scope Note</b>		Petite glande masculine, la prostate est située sous la vessie, à proximité des voies urinaires et génitales. Cet organe peut être victime de diverses affections : infection de la prostate ou prostatite, l'adénocarcinome de la prostate et le cancer de la prostate. Le cancer de la prostate représente le premier cancer de l'homme en France devant celui du poumon.

### Types d'associations

BT-NT, TG-TS,

- Cancer
  - Cancer de l'estomac
  - Cancer de la bouche
  - Cancer de la gorge
  - cancer de la peau
  - Cancer de la peau
  - Cancer de la prostate
  - Cancer de la thyroïde
  - Cancer de la vessie
  - Cancer des bronches
  - Cancer des testicules
  - Cancer du colon
  - Cancer du foie
  - Cancer du pome...

Descriptor, Terme [ACTIONS]

Editer  
Supprimer  
Remonter au top  
Ajouter au dossier  
Commenter  
Docs. indexés  
Metadonnées  
Graphe

Créer  
Ajouter à côté  
Ajouter dessous

[SELECTION]

Sélectionner  
Effacer

Relier à  
Déplacer sous

[RELATIONS]

Suppr. relations  
\* Vieillesse

javascript:switchDisplayLanguage(104253,29); Intranet local

Tunis said the final ICD coverage decision will have relatively few changes. He explained that although Medicare is establishing a registry of patients who receive the devices, physicians will not be required to explain why a particular device is used in order to receive reimbursement, as was suggested under the preliminary decision. The registry will allow Medicare and researchers to track how well the devices perform in various groups of patients over time.

ICDs vary in type and cost. Medtronic Inc. (MDT), Guidant Corp. (GDT) and St. Jude Medical Inc. (STJ), the three biggest device makers, stand to benefit from the decision. **Johnson & Johnson (JNJ) has announced plans to acquire Guidant**

The study was primarily funded by the National Institutes of Health. Medtronic and Wyeth (WYE) also contributed to the study's funding.

## Johnson & Johnson

**Alias** J&J  
J & J

**Association types :** CoMarketing, Company Acquisition, Financial Revenue, Regulation Pending

### ▶ member in CoMarketing, CoMarketing

**member**

▶ ▶ Icagen

**partnership event**

▶ Icagen and Johnson & Johnson comarket

### ▶ acquired in Acquisition/Vente d'une société, Company Acquisition

**acquiring**

▶ ▶ GlaxoSmithKline PLC ( GSK )

**acquisition event**

▶ GlaxoSmithKline PLC ( GSK ) acquires Johnson & Johnson (reported last month that)

**trust level**

▶ reported last month that  
▶ Expected

### ▶ acquiring in Acquisition/Vente d'une société, Company Acquisition

**acquired**

▶ ▶ Guidant Corp.

**acquisition event**

▶ Johnson & Johnson acquires Guidant Corp.

**trust level**

▶ ▶ Egea Biosciences Inc.

▶ Johnson & Johnson acquires Egea Biosciences Inc.

▶ ▶ Guidant

▶ Johnson & Johnson acquires Guidant (plans to)

▶ plans to

### ▶ company tr in Financial Revenue, Revenus Financiers

**amount tr**

▶ ▶ \$11 billion

**financial fact**

▶ Johnson & Johnson announces revenues of \$11 billion (would)

**trust level**

▶ would

### ▶ owner in Regulation en attente, Regulation Pending

**organism tr**

▶ ▶ U.S. Food and Drug Administration

**product regulated**

▶ Ditropan

**regulation event**

▶ U.S. Food and Drug Administration hasn't statued yet on Ditropan from Johnson & Johnson



Treatment - Microsoft Internet Explorer

Fichier Edition Affichage Favoris Outils ?

Précédente Rechercher Favoris McAfee VirusScan

Adresse http://localhost:65000/audit/Center.action?id=100059

**SUJET**

CRÉER

- Subject
- Entity
  - Company
  - Production
  - Regulatory Agency
- Event
  - Acquisition
  - Agreement
    - Companies codevelopment
    - Companies comarketing
    - Companies Licensing
    - Companies partnership
  - Companies merger
- Regulation
- Fact
- Other Subject

**HISTORIQUE**

- home
- treatment

**TREATMENT**

Class [ACTIONS]

---

**Informations générales**

<b>French</b>	Traitement médical	
<b>Concept Temis, Temis Concept</b>	/Treatment	
	/Product	
	/what/Treatment	

---

**Types d'associations**

ASSOCIATION CONSTRAINT, ATTRIBUTE CONSTRAINT, CLASS-SUBCLASS

**ASSOCIATION CONSTRAINT**

constrained - association	constrained - class	constrained - role
↳ Partnership	↳ Treatment	↳ treatment tr
↳ Company Unit Acquisition	↳ Treatment	↳ acquired
↳ Regulation Refusal	↳ Treatment	↳ product regulated
↳ Regulation Pending	↳ Treatment	↳ product regulated
↳ CoDevelopment	↳ Treatment	↳ treatment tr
↳ CoMarketing	↳ Treatment	↳ treatment tr
↳ License	↳ Treatment	↳ treatment tr
↳ Regulation Approval	↳ Treatment	↳ product regulated

**ATTRIBUTE CONSTRAINT**

constrained - attribute	constrained - class
↳ Link	↳ Treatment
↳ subject	↳ Treatment
↳ Scope Note	↳ Treatment

[ACTIONS]

- Editer
- Supprimer
- Commenter
- Ajouter au dossier
- Metadonnées
- Graphie
- Créer

[SELECTION]

---

Effacer

[RELATIONS]

http://localhost:65000/audit/Center.action?id=100189

Intranet local

Biaxin - Microsoft Internet Explorer

Fichier Edition Affichage Favoris Outils ?

Précédente Recherche Favoris

Adresse http://localhost:65000/audit/SwitchDisplayLanguage.action?topicId=100930&langId=29

Administrateur LifeScience dans LifeScience Knowledge Base Dossier : Pas de dossier actif

Chercher : biaxin dans : All

Navigation : Accueil, Recherche, Favoris, Imprimer, Arrêter, Quitter

**SUJET**

CRÉER

- Subject
- Entity, Entité
- Event, Événement
- Fact, Fait
- Other Subject, Sujet divers

**HISTORIQUE**

- home
- folder
- abbott laboratories inc.
- prostate cancer
- biaxin
- cancer de la prostate
- biaxin
- abbott laboratories inc.
- prostate cancer
- biaxine

**BIAXIN** Traitement médical, Treatment [ACTIONS]

### Informations générales

<b>French</b>	biaxine
<b>Link</b>	BIAXIN web Site
<b>Note d'application, Scope Note</b>	What is the most important information I should know about clarithromycin? ↓ Take all of the clarithromycin that has been prescribed for you even if you begin to feel better. Your symptoms may start to improve before the infection is completely treated. ↓ Do not take clarithromycin if you are taking cisapride (Propulsid), pimozide (Orap), or terfenadine (Seldane). These medicines can interact, possibly leading to a dangerous irregular heartbeat pattern.
<b>subject, sujet</b>	Cancer de la prostate, Prostate cancer

### Types d'associations

REGULATION APPROVAL, REGULATION APPROUVÉE

organism tr	owner	product regulated	regulation event
▶ U.S. Food and Drug Administration	▶ Xinlay	▶ Biaxin ▶ prostate cancer drug	▶ U.S. Food and Drug Administration accepts prostate-cancer drug and Biaxin from Xinlay

**Editer**

Supprimer

Commenter

Ajouter au dossier

Metadonnées

Graphique

---

Créer

[SELECTION]

---

Effacer

[RELATIONS]

www.scit-switchDisplayLanguage?100930.801

Intranet local

Abbott Laboratories Inc. - Microsoft Internet Explorer

Fichier Edition Affichage Favoris Outils ?

Précédente Recherche Favoris

Adresse http://localhost:65000/audit/Center.action?id=100729

Administrateur LifeScience dans LifeScience Knowledge Base Dossier : Pas de dossier actif

Chercher :  dans : All

titre  
 plein texte  
 tout début  
 exact

Multirisères Taxonomie

**SUJET**

CRÉER

- Subject
- Entity, Entité
- Event, Événement
- Fact, Fait
- Other Subject, Sujet divers

**HISTORIQUE**

- folder
- abbott laboratories inc.
- prostate cancer
- biaxin
- cancer de la prostate
- biaxin
- abbott laboratories inc.
- prostate cancer
- biaxine
- abbott laboratories inc.

## ABBOTT LABORATORIES INC.

Company, Société [ACTIONS]

Editer

Supprimer

Commenter

Ajouter au dossier

Metadonnées

Graphe

Créer

[SELECTION]

Effacer

[RELATIONS]

### Informations générales

Alias, Alias	Abbott
	Abbott Laboratories

### Types d'associations

ACQUISITION/VENTE D'UNE SOCIÉTÉ, COMPANY ACQUISITION, ACQUISITION D'ACTIONS D'UNE SOCIÉTÉ, STAKE ACQUISITION, CODEVELOPMENT, CODEVELOPPEMENT, COMARKETING, COMARKETING, FINANCIAL REVENUE, REVENUS FINANCIERS, REGULATION EN ATTENTE, REGULATION PENDING

ACQUISITION/VENTE D'UNE SOCIÉTÉ, COMPANY ACQUISITION			
acquired	acquiring	acquisition event	amount tr
<ul style="list-style-type: none"> <li>Spinal Concepts Inc.</li> <li>Abbott Laboratories Inc.</li> </ul>	<ul style="list-style-type: none"> <li>Biomet Inc.</li> </ul>	<ul style="list-style-type: none"> <li>Biomet Inc. acquires Spinal Concepts Inc. and Abbott Laboratories Inc.</li> </ul>	<ul style="list-style-type: none"> <li>\$1 million</li> </ul>

ACQUISITION/VENTE D'UNE SOCIÉTÉ, COMPANY ACQUISITION		
acquired	acquiring	acquisition event
<ul style="list-style-type: none"> <li>Hospira</li> </ul>	<ul style="list-style-type: none"> <li>Abbott Laboratories Inc.</li> </ul>	<ul style="list-style-type: none"> <li>Abbott Laboratories Inc. acquires Hospira</li> </ul>

ACQUISITION D'ACTIONS D'UNE SOCIÉTÉ, STAKE ACQUISITION			
acquiring	acquisition event	owner	trust level
<ul style="list-style-type: none"> <li>Abbott Laboratories Inc.</li> </ul>	<ul style="list-style-type: none"> <li>Abbott Laboratories Inc. acquires stakes of Icagen (Expected)</li> </ul>	<ul style="list-style-type: none"> <li>Icagen</li> </ul>	<ul style="list-style-type: none"> <li>Expected</li> </ul>

Biomet Inc. acquires Spinal Concepts Inc. and Abbott Laboratories Inc. - Microsoft Internet Explorer

Précédente • Recherche Favoris

Adresse: <http://localhost:65000/audit/Center.action?id=101359>

Administrateur LifeScience dans LifeScience Knowledge Base Dossier : Pas de dossier actif

Chercher :  dans

**SUJET**

CREER

- Subject
- Entity
- Event
- Fact
- Other Subject

**HISTORIQUE**

- biacin
- cancer de la prostate
- biacin
- abbott laboratories inc.
- prostate cancer
- biacine
- abbott laboratories inc.
- biacin
- abbott laboratories inc.
- biomet inc. acquies s...

**BIOMET INC. ACQUIRES SPINAL CONCEPTS INC. AND ABBOTT...**

**Informations générales**

Article preuve, CU proof Article factiva-DJCFWEC  
 CU Extract, Extrait Article Biomet Inc. ( BMET ) ag of healthcare-product g

**Types d'associations**

ACQUISITION/VENTE D'UNE SOCIÉTÉ, COMPANY ACQUISITION

acquired	acquiring
<ul style="list-style-type: none"> <li>Spinal Concepts Inc.</li> <li>Abbott Laboratories Inc.</li> </ul>	<ul style="list-style-type: none"> <li>Biomet Inc.</li> </ul>

<http://demo.lemis-group.com - factiva-DJ0000002005011>

Fichier Edition Affichage Favoris Outils ?

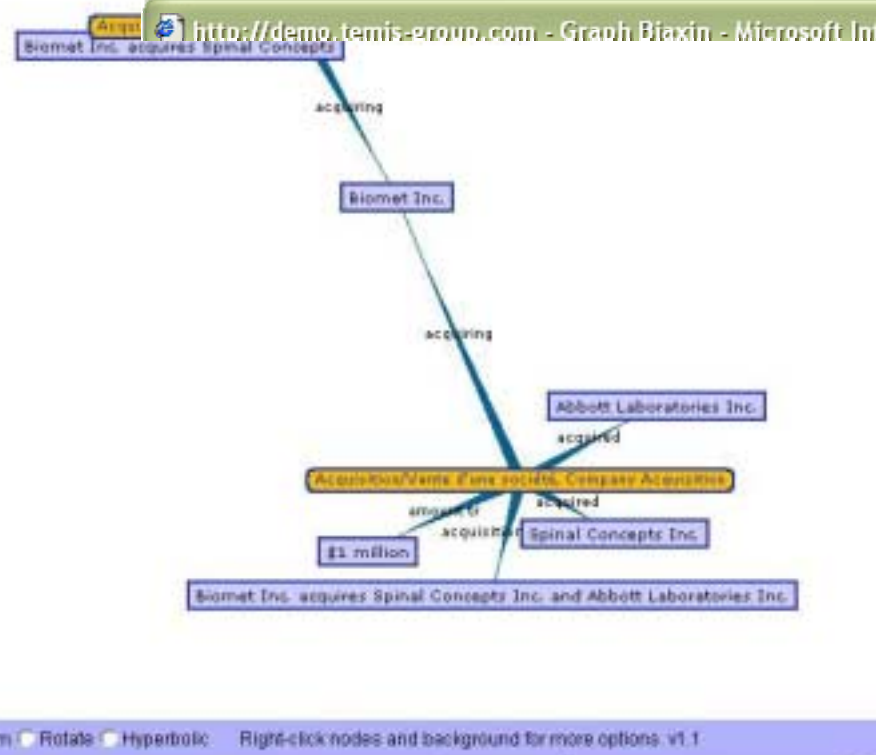
**factiva™**  
Dow Jones & Reuters

**UPDATE: Abbott's 4Q Sales Beat Estimates**

Dow Jones News Service - 2005-01-18

CHICAGO (Dow Jones)--Abbott Laboratories (ABT) reported better sales in the fourth quarter than analysts expected, bolstered by strength of its pharmaceutical products.

Per-share earnings, however, were up 8.1% at 67 cents before its tax expense. Including items, per-share earnings rose to 62 cents from 57 cents in the third quarter.





Biomet Inc. acquies Spinal Concepts Inc. and Abbott Laboratories Inc. - Microsoft Internet Explorer

Précédente • Recherche Favoris

Adresse: <http://localhost:65000/audit/Center.action?id=101359>

Administrateur LifeScience dans LifeScience Knowledge Base Dossier : Pas de dossier actif

Chercher :  dans :  GO

**SUJET**

CREER

- Subject
- Entity
- Event
- Fact
- Other Subject

**HISTORIQUE**

- biacin
- cancer de la prostate
- biacin
- abbott laboratories inc.
- prostate cancer
- biacine
- abbott laboratories inc.
- biacin
- abbott laboratories inc.
- biomet inc. acquies s...

**BIOMET INC. ACQUIRES SPINAL CONCEPTS INC. AND ABBOTT LABORATORIES INC.**

**Informations générales**

Article preuve, CU proof Article factiva-DJCFWE0020050111e11b00bkp  
 CU Extract, Extrait Article Biomet Inc. ( BMET ) of healthcare-product giant Abbott Laboratories ( ABT ) , in a settl...

**Types d'associations**

ACQUISITION/VENTE D'UNE SOCIÉTÉ, COMPANY ACQUISITION

acquired	acquiring
<ul style="list-style-type: none"> <li>Spinal Concepts Inc.</li> <li>Abbott Laboratories Inc.</li> </ul>	<ul style="list-style-type: none"> <li>Biomet Inc.</li> </ul>

**Edit Acquisition d'une société. Company acquisition - Microsoft Internet Explorer**

EDIT ACQUISITION D'UNE SOCIÉTÉ, COMPANY ACQUISITION BIOMET INC. ACQUIRES SPINAL CONCEPTS INC. AND ABBOTT LABORATORIES INC.

GENERIC INFORMATION ASSOCIATIONS

**AMOUNT, MONTANT** (\*,\*) [0]

**ARTICLE PREUVE, CU PROOF** (\*,\*) [1]

- Article factiva-DJCFWE0020050111e11b00bkp

**CU EXTRACT, EXTRAIT ARTICLE** (\*,\*) [1]

- Biomet Inc. ( BMET ) agreed to pay \$1 million to Spinal Concepts Inc. , a unit of healthcare-product giant Abbott Laboratories ( ABT ) , in a settl...

**DATE, DATE** (\*,\*) [0]

**LIEU, LOCATION** (\*,\*) [0]

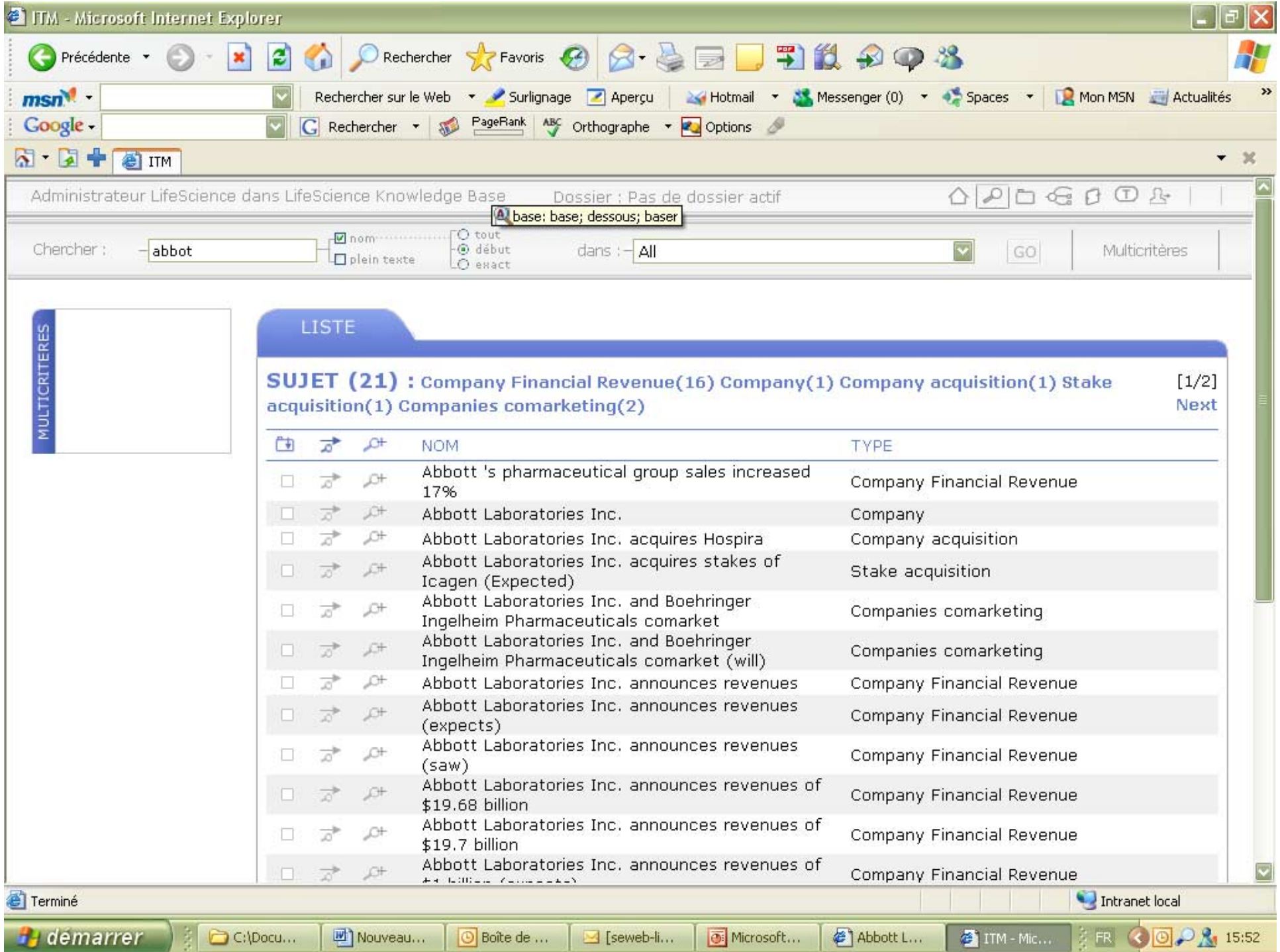
**NIVEAU DE CONFIANCE, TRUST LEVEL** (\*,\*) [0]

**SUBJECT, SUJET** (\*,\*) [0]

After closing...  
 Close this window  Enter another object  Continue editing

intranet local

javscript:go(101351);



MULTICRITERES

### LISTE

**SUJET (21) : Company Financial Revenue(16) Company(1) Company acquisition(1) Stake acquisition(1) Companies comarketing(2)** [1/2] Next

			NOM	TYPE
<input type="checkbox"/>			Abbott 's pharmaceutical group sales increased 17%	Company Financial Revenue
<input type="checkbox"/>			Abbott Laboratories Inc.	Company
<input type="checkbox"/>			Abbott Laboratories Inc. acquires Hospira	Company acquisition
<input type="checkbox"/>			Abbott Laboratories Inc. acquires stakes of Icagen (Expected)	Stake acquisition
<input type="checkbox"/>			Abbott Laboratories Inc. and Boehringer Ingelheim Pharmaceuticals comarket	Companies comarketing
<input type="checkbox"/>			Abbott Laboratories Inc. and Boehringer Ingelheim Pharmaceuticals comarket (will)	Companies comarketing
<input type="checkbox"/>			Abbott Laboratories Inc. announces revenues	Company Financial Revenue
<input type="checkbox"/>			Abbott Laboratories Inc. announces revenues (expects)	Company Financial Revenue
<input type="checkbox"/>			Abbott Laboratories Inc. announces revenues (saw)	Company Financial Revenue
<input type="checkbox"/>			Abbott Laboratories Inc. announces revenues of \$19.68 billion	Company Financial Revenue
<input type="checkbox"/>			Abbott Laboratories Inc. announces revenues of \$19.7 billion	Company Financial Revenue
<input type="checkbox"/>			Abbott Laboratories Inc. announces revenues of \$19.7 billion (saw)	Company Financial Revenue

Terminé

Intranet local

Chercher : prostate dans : All GO Multicritères

MULTICRITERES

VOIR AUSSI Prostate cancer Ageing

LISTE

Prostate cancer (voir aussi)

ALIAS (3)

- prostate-cancer
prostatic adenocarcinoma
adenocarcinoma

All indewé par plein texte GO

SUJET (5) : Treatment(2) Treatment regulation pending(1) Treatment regulation refusal(1) Treatment regulation approval(1) [1/1]

Table with 2 columns: NOM, TYPE. Rows include Biaxin, Food and Drug Administration hasn't statued yet on prostate-cancer drug from Abbott Laboratories Inc., Food and Drug Administration refuses Erbitux and cancer drug from ImClone Systems Inc., prostate cancer drug, U.S. Food and Drug Administration accepts prostate-cancer drug and Biaxin from Xinlay.

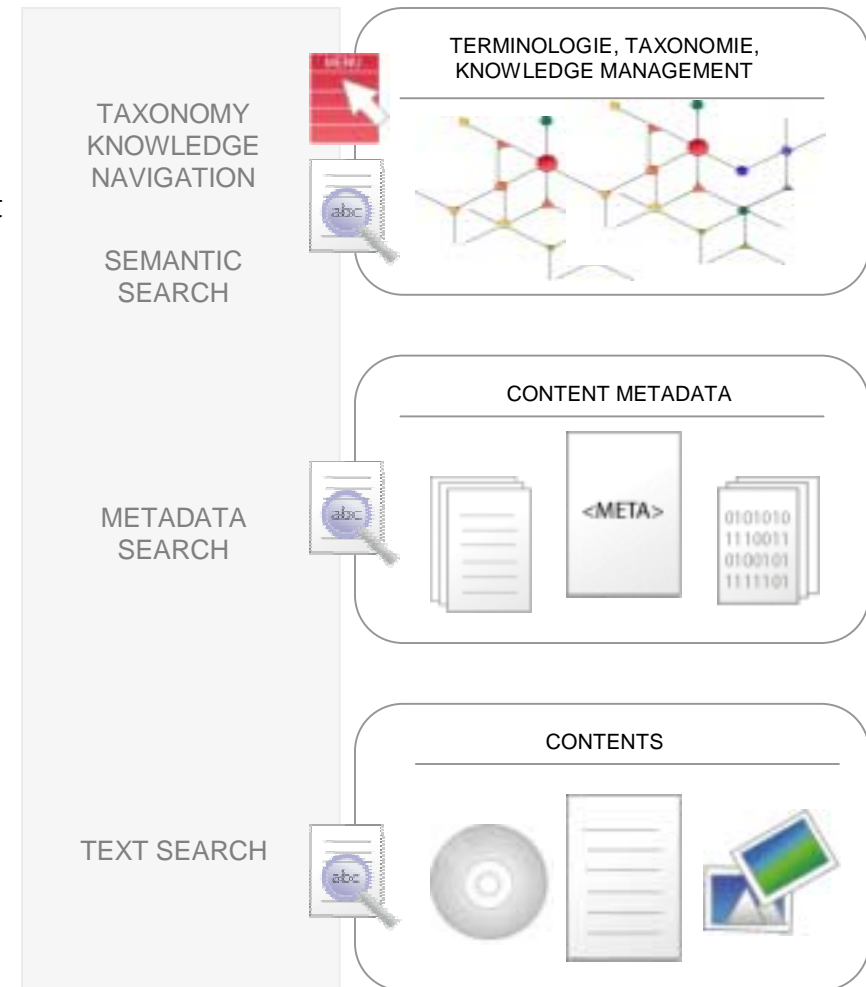
DOCUMENT (2)



# Knowledge driven content access



- Knowledge navigation to access to content
- Multiple views
- Direct access to content from business subject
- Federate distributed content
- Leverage search engine with corporate terminology





Thanks for your  
attention

**Dr. Charles Huot**

**Charles.Huot@temis-group.com**

**Copyright ©2005 Temis  
All Rights Reserved**